

Student Travel Tally Report:

School Name: Vallecito

Month and Year Collected: September 2023

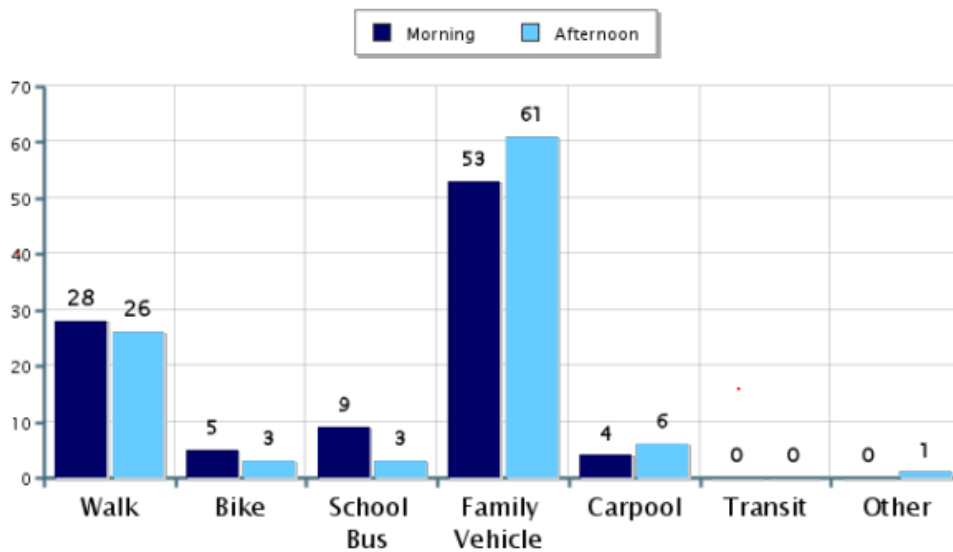
Number of

Classrooms Included in Report: 15

Number of Students: 423

This report contains information from your school's classrooms about students' trip to and from school. The data used in this report were collected using the in-class Student Travel Tally questionnaire from the National Center for Safe Routes to School.

Morning and Afternoon Travel Mode Comparison

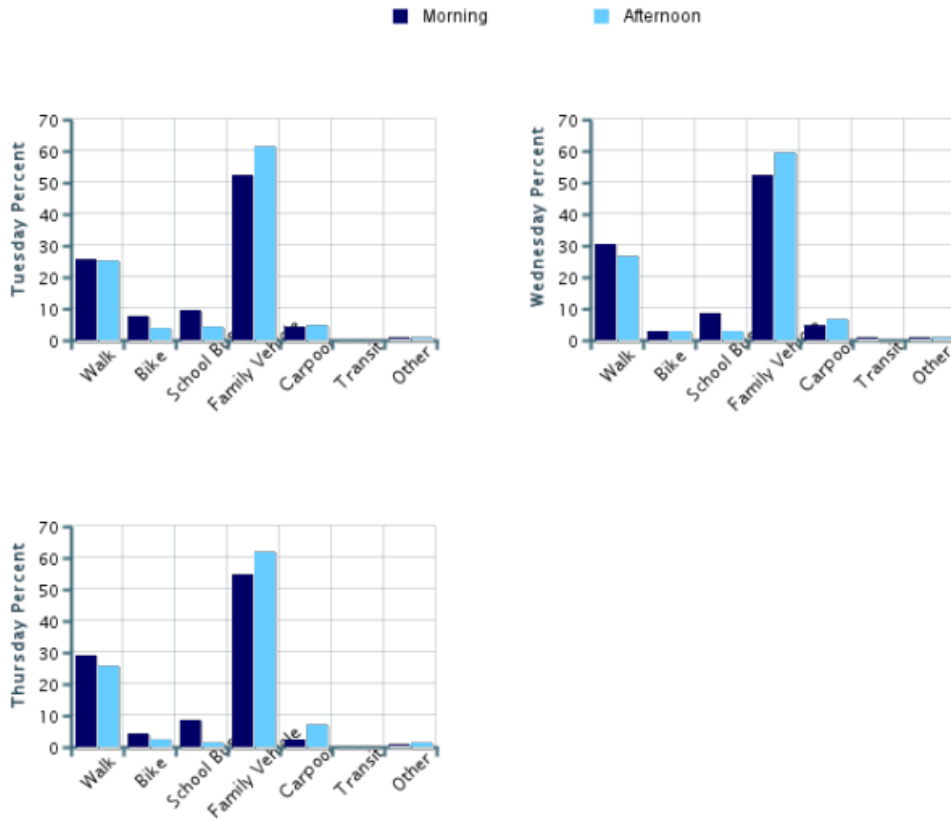


Morning and Afternoon Travel Mode Comparison

	Number of Trips	Walk	Bike	School Bus	Family Vehicle	Carpool	Transit	Other
Morning	696	28%	5%	9%	53%	4%	0.1%	0.4%
Afternoon	694	26%	3%	3%	61%	6%	0%	0.9%

Percentages may not total 100% due to rounding.

Morning and Afternoon Travel Mode Comparison by Day

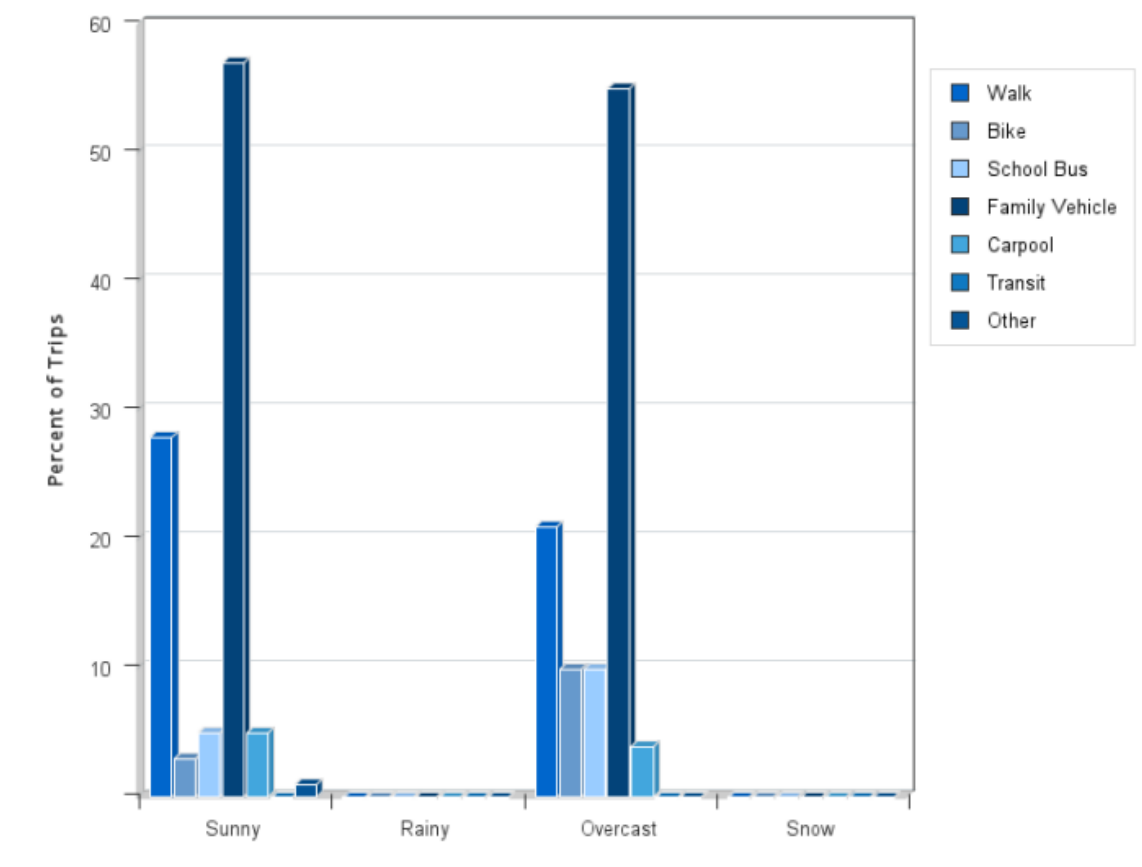


Morning and Afternoon Travel Mode Comparison by Day

	Number of Trips	Walk	Bike	School Bus	Family Vehicle	Carpool	Transit	Other
Tuesday AM	260	26%	8%	10%	52%	4%	0%	0.4%
Tuesday PM	260	25%	4%	4%	62%	5%	0%	0.4%
Wednesday AM	236	31%	3%	8%	53%	5%	0.4%	0.4%
Wednesday PM	235	27%	3%	3%	60%	7%	0%	0.9%
Thursday AM	200	29%	5%	9%	55%	3%	0%	0.5%
Thursday PM	199	26%	3%	2%	62%	7%	0%	2%

Percentages may not total 100% due to rounding.

Travel Mode by Weather Conditions



Travel Mode by Weather Condition

Weather Condition	Number of Trips	Walk	Bike	School Bus	Family Vehicle	Carpool	Transit	Other
Sunny	1169	28%	3%	5%	57%	5%	0.1%	0.8%
Rainy	0	0%	0%	0%	0%	0%	0%	0%
Overcast	221	21%	10%	10%	55%	4%	0%	0%
Snow	0	0%	0%	0%	0%	0%	0%	0%

Percentages may not total 100% due to rounding.