

# Student Travel Tally Report:

**School Name:** Sun Valley

**Month and Year Collected:** September 2023

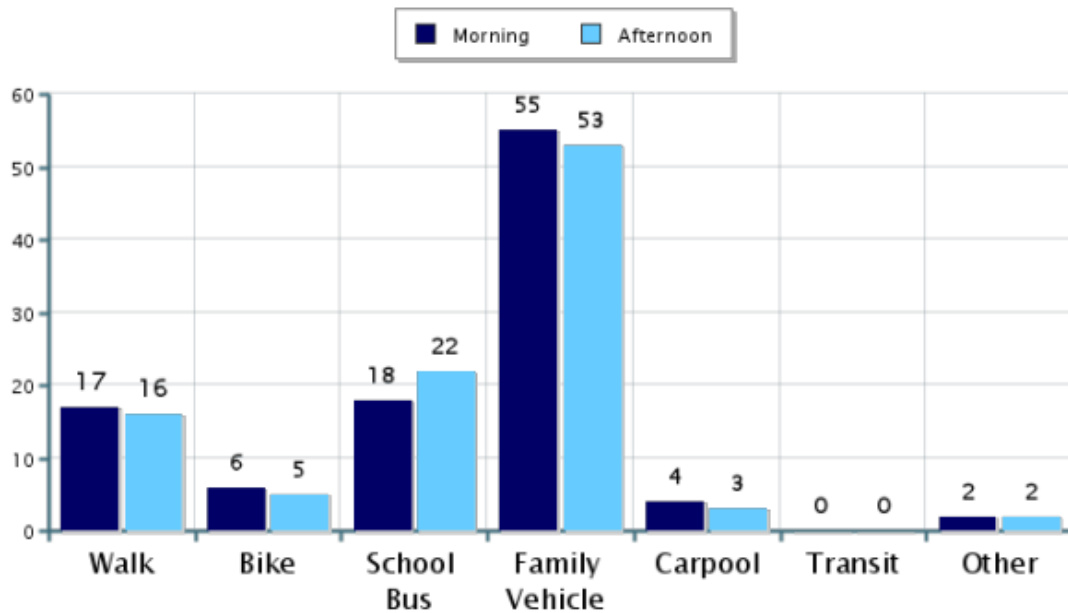
**Number of**

**Classrooms Included in Report:** 17

**Number of Students:** 510

This report contains information from your school's classrooms about students' trip to and from school. The data used in this report were collected using the in-class Student Travel Tally questionnaire from the National Center for Safe Routes to School.

## Morning and Afternoon Trael Mode Comparison

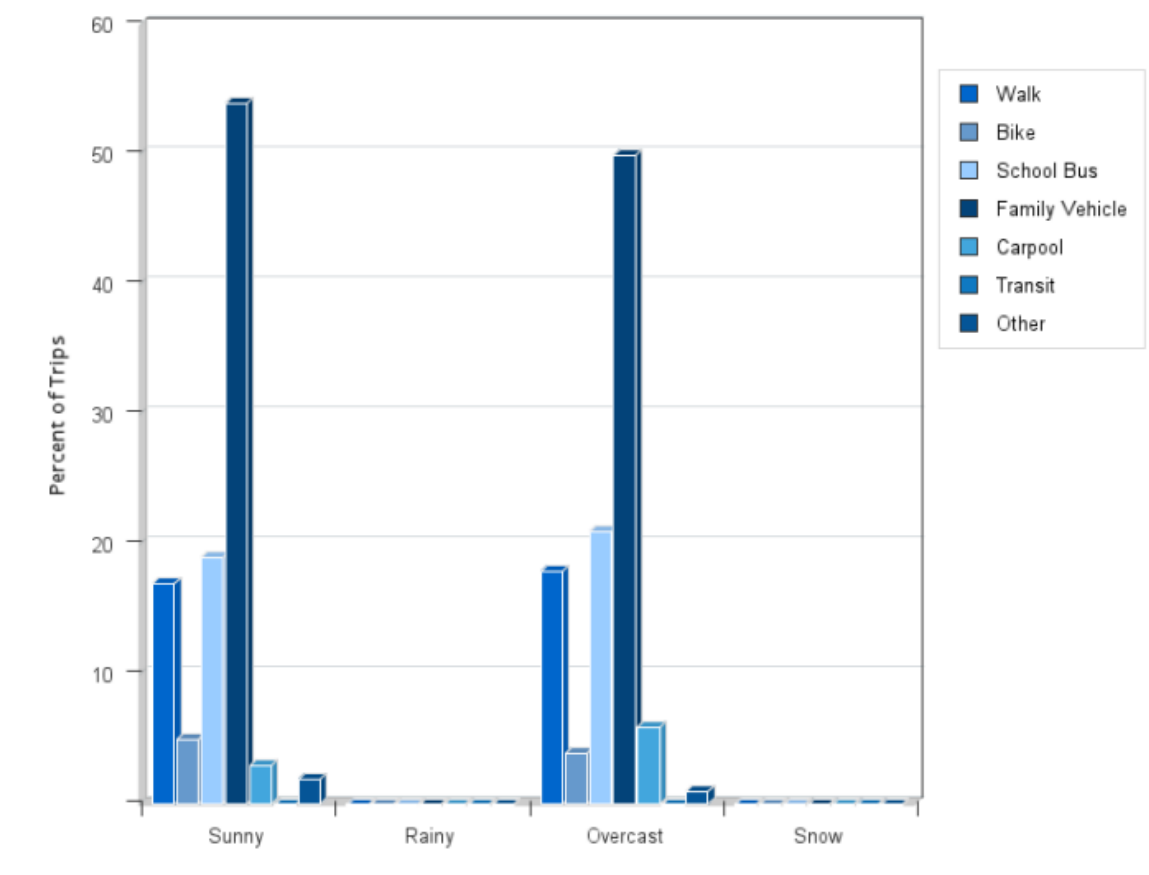


## Morning and Afternoon Travel Mode Comparison

|           | Number of Trips | Walk | Bike | School Bus | Family Vehicle | Carpool | Transit | Other |
|-----------|-----------------|------|------|------------|----------------|---------|---------|-------|
| Morning   | 1130            | 17%  | 6%   | 18%        | 55%            | 4%      | 0%      | 2%    |
| Afternoon | 1037            | 16%  | 5%   | 22%        | 53%            | 3%      | 0%      | 2%    |

Percentages may not total 100% due to rounding.

## Travel Mode by Weather Conditions



## Travel Mode by Weather Condition

| Weather Condition | Number of Trips | Walk | Bike | School Bus | Family Vehicle | Carpool | Transit | Other |
|-------------------|-----------------|------|------|------------|----------------|---------|---------|-------|
| Sunny             | 1803            | 17%  | 5%   | 19%        | 54%            | 3%      | 0%      | 2%    |
| Rainy             | 0               | 0%   | 0%   | 0%         | 0%             | 0%      | 0%      | 0%    |
| Overcast          | 364             | 18%  | 4%   | 21%        | 50%            | 6%      | 0%      | 1%    |
| Snow              | 0               | 0%   | 0%   | 0%         | 0%             | 0%      | 0%      | 0%    |

Percentages may not total 100% due to rounding.