

Student Travel Tally Report:

School Name: Strawberry Point

Month and Year Collected: September 2023

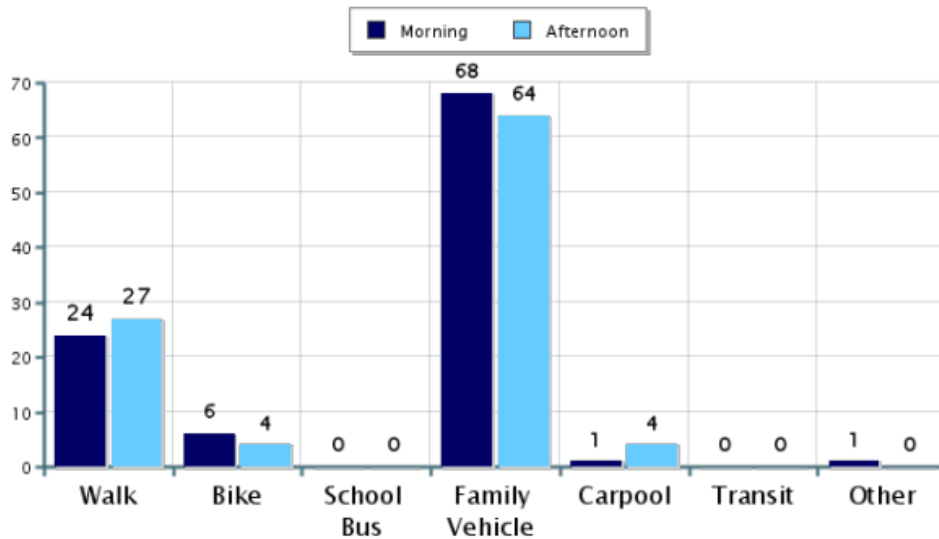
Number of

Classrooms Included in Report: 12

Number of Students: 250

This report contains information from your school's classrooms about students' trip to and from school. The data used in this report were collected using the in-class Student Travel Tally questionnaire from the National Center for Safe Routes to School.

Morning and Afternoon Travel Mode Comparison

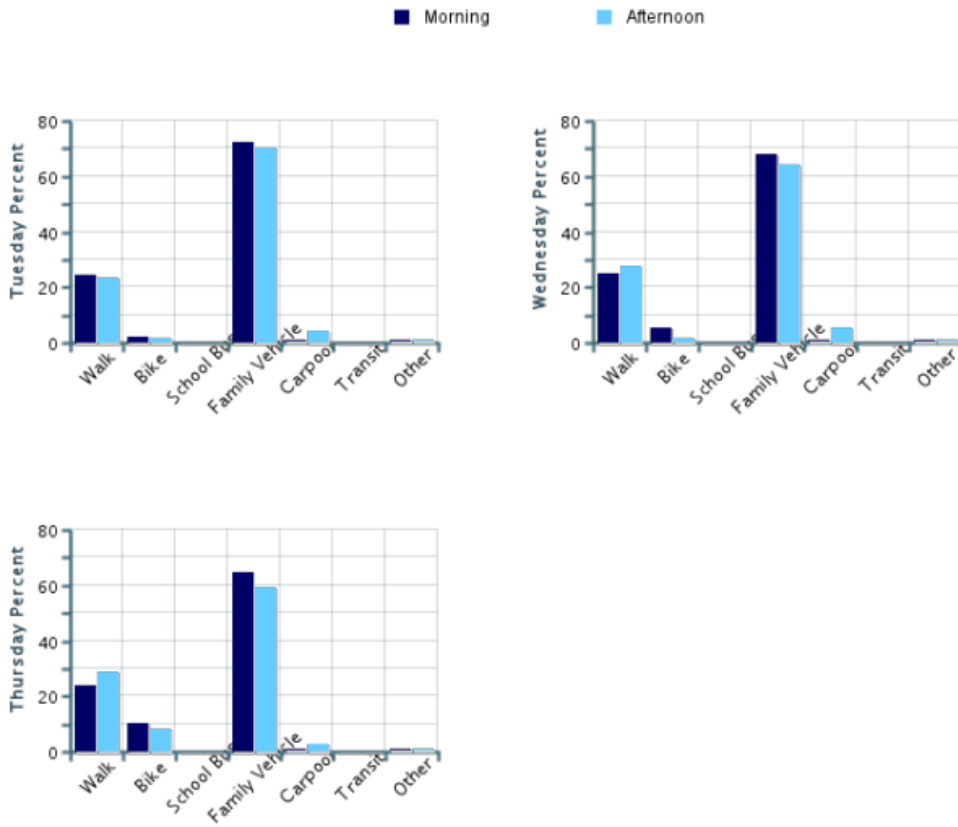


Morning and Afternoon Travel Mode Comparison

	Number of Trips	Walk	Bike	School Bus	Family Vehicle	Carpool	Transit	Other
Morning	649	24%	6%	0%	68%	0.8%	0%	0.6%
Afternoon	659	27%	4%	0%	64%	4%	0%	0.5%

Percentages may not total 100% due to rounding.

Morning and Afternoon Travel Mode Comparison by Day

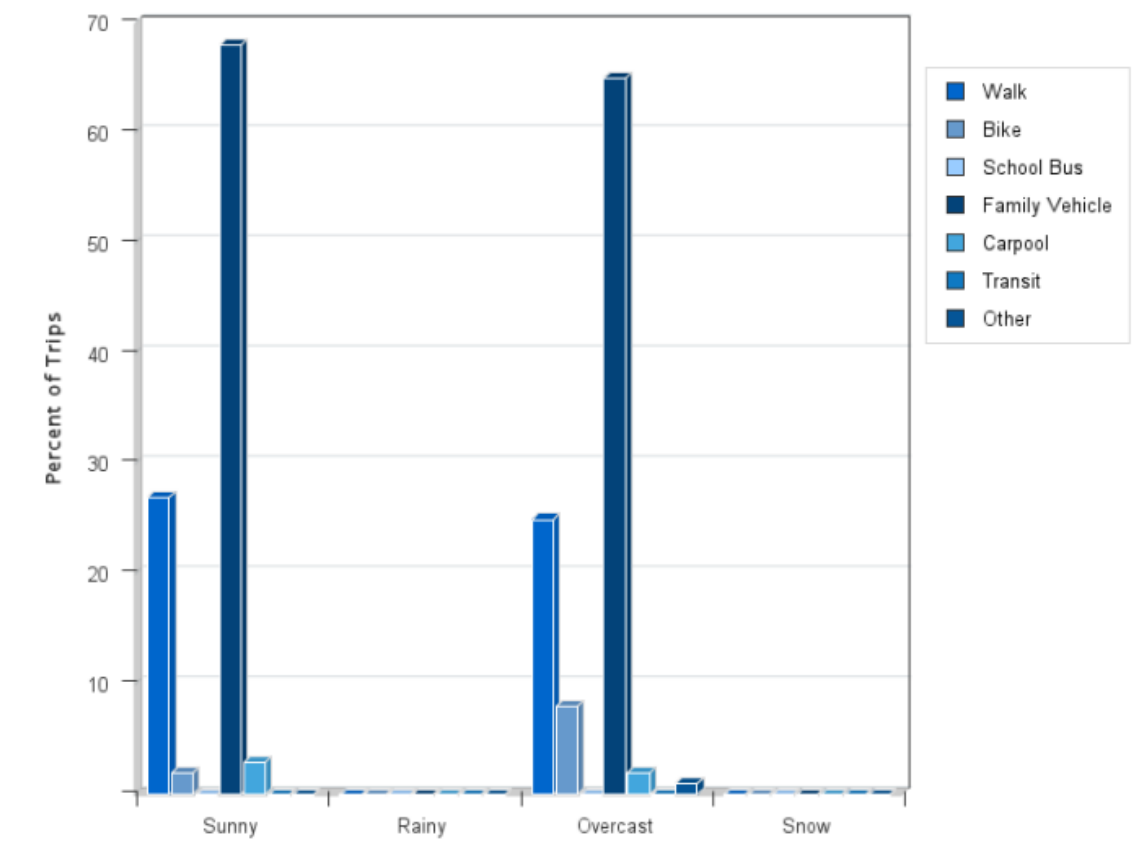


Morning and Afternoon Travel Mode Comparison by Day

	Number of Trips	Walk	Bike	School Bus	Family Vehicle	Carpool	Transit	Other
Tuesday AM	213	24%	2%	0%	72%	0.5%	0%	0.5%
Tuesday PM	210	23%	2%	0%	70%	4%	0%	0.5%
Wednesday AM	218	25%	6%	0%	68%	0.9%	0%	0.9%
Wednesday PM	212	28%	2%	0%	64%	6%	0%	0.5%
Thursday AM	218	24%	10%	0%	65%	0.9%	0%	0.5%
Thursday PM	237	29%	8%	0%	59%	3%	0%	0.4%

Percentages may not total 100% due to rounding.

Travel Mode by Weather Conditions



Travel Mode by Weather Condition

Weather Condition	Number of Trips	Walk	Bike	School Bus	Family Vehicle	Carpool	Transit	Other
Sunny	684	27%	2%	0%	68%	3%	0%	0.4%
Rainy	0	0%	0%	0%	0%	0%	0%	0%
Overcast	624	25%	8%	0%	65%	2%	0%	0.6%
Snow	0	0%	0%	0%	0%	0%	0%	0%

Percentages may not total 100% due to rounding.