

# Student Travel Tally Report:

**School Name:** San Jose Middle

**Month and Year Collected:** September 2023

**Number of**

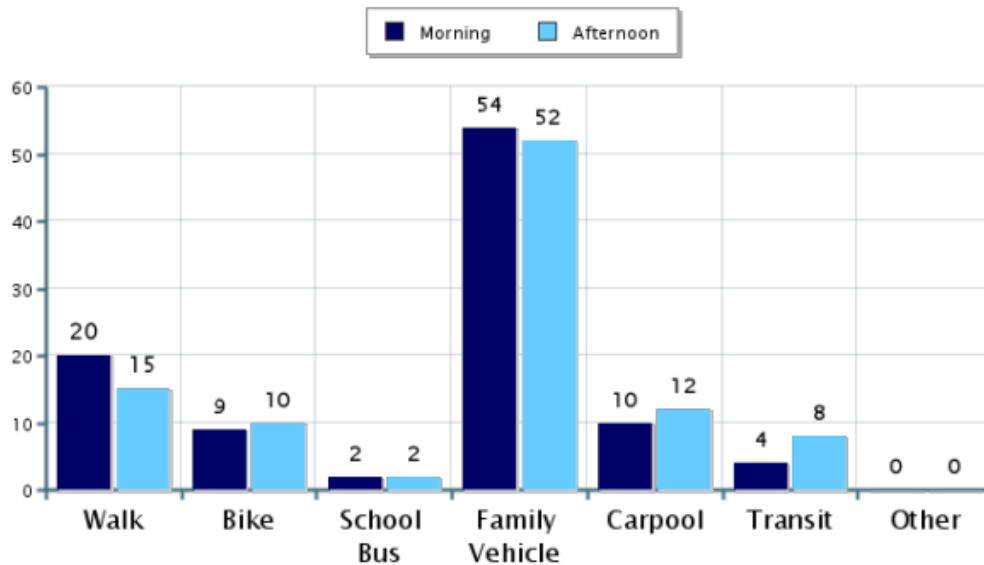
**Classrooms Included in Report:** 29

**Number of Students:** 606

This report contains information from your school's classrooms about students' trip to and from school. The data used in this report were collected using the in-class Student Travel Tally questionnaire from the National Center for Safe Routes to School.

## Morning and Afternoon Travel Mode Comparison

### Morning and Afternoon Travel Mode Comparison

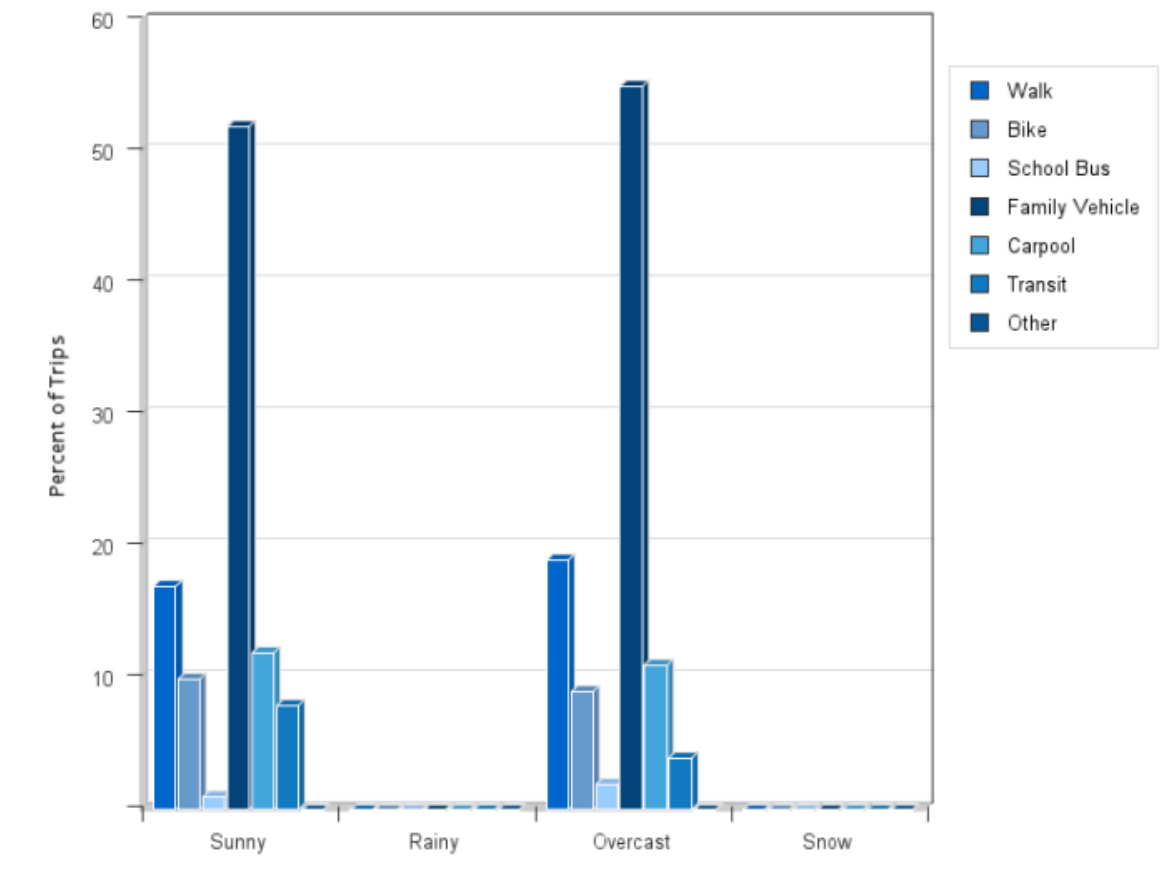


### Morning and Afternoon Travel Mode Comparison

	Number of Trips	Walk	Bike	School Bus	Family Vehicle	Carpool	Transit	Other
Morning	912	20%	9%	2%	54%	10%	4%	0.2%
Afternoon	729	15%	10%	2%	52%	12%	8%	0.3%

Percentages may not total 100% due to rounding.

## Travel Mode by Weather Conditions



## Travel Mode by Weather Condition

Weather Condition	Number of Trips	Walk	Bike	School Bus	Family Vehicle	Carpool	Transit	Other
Sunny	883	17%	10%	1%	52%	12%	8%	0.2%
Rainy	0	0%	0%	0%	0%	0%	0%	0%
Overcast	758	19%	9%	2%	55%	11%	4%	0.3%
Snow	0	0%	0%	0%	0%	0%	0%	0%

Percentages may not total 100% due to rounding.