

# Student Travel Tally Report:

**School Name:** Reed

**Month and Year Collected:** September 2023

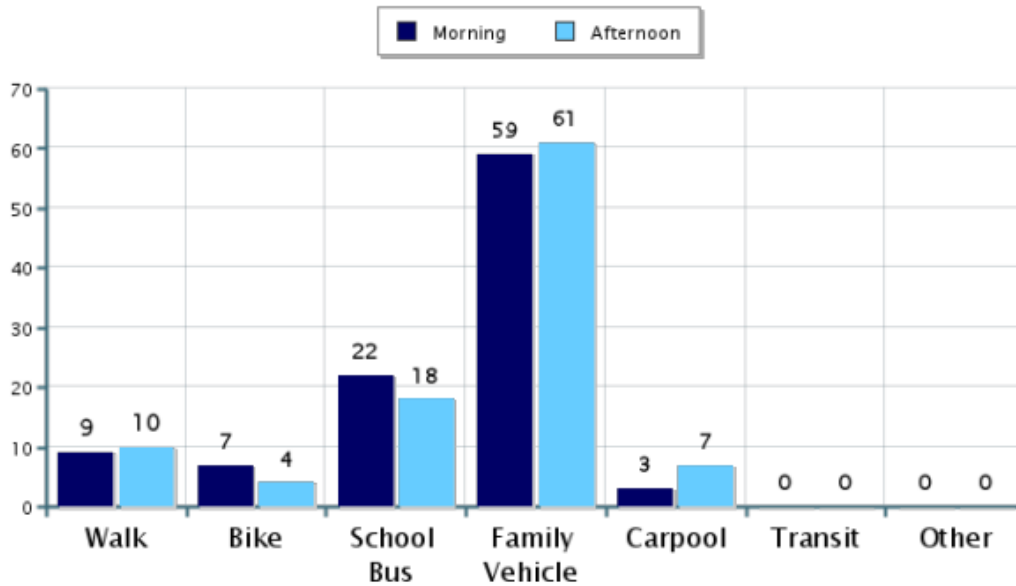
**Number of**

**Classrooms Included in Report:** 21

**Number of Students:** 355

This report contains information from your school's classrooms about students' trip to and from school. The data used in this report were collected using the in-class Student Travel Tally questionnaire from the National Center for Safe Routes to School.

## Morning and Afternoon Travel Mode Comparison

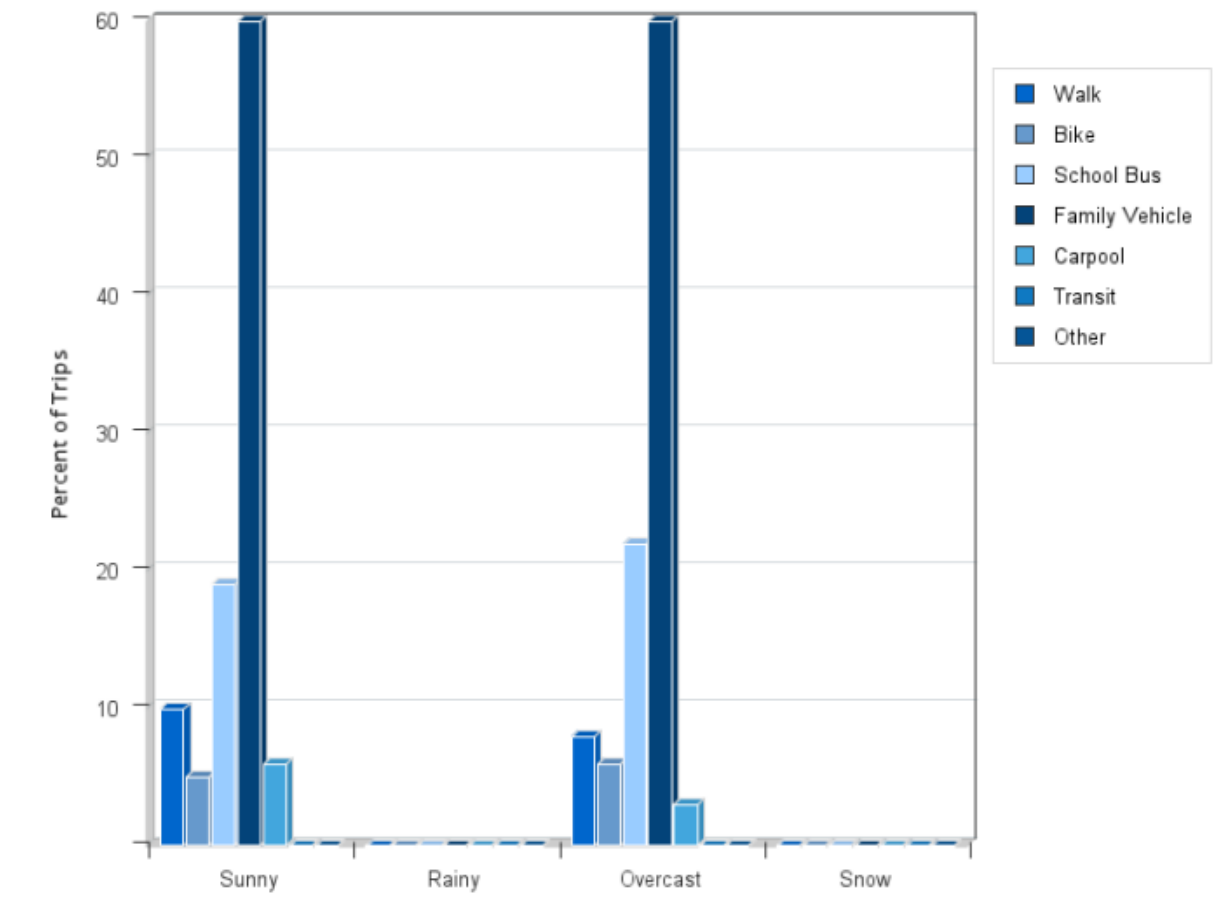


## Morning and Afternoon Travel Mode Comparison

	Number of Trips	Walk	Bike	School Bus	Family Vehicle	Carpool	Transit	Other
Morning	672	9%	7%	22%	59%	3%	0%	0.3%
Afternoon	579	10%	4%	18%	61%	7%	0%	0.3%

Percentages may not total 100% due to rounding.

## Travel Mode by Weather Conditions



## Travel Mode by Weather Condition

Weather Condition	Number of Trips	Walk	Bike	School Bus	Family Vehicle	Carpool	Transit	Other
Sunny	676	10%	5%	19%	60%	6%	0%	0.3%
Rainy	0	0%	0%	0%	0%	0%	0%	0%
Overcast	575	8%	6%	22%	60%	3%	0%	0.3%
Snow	0	0%	0%	0%	0%	0%	0%	0%

Percentages may not total 100% due to rounding.