

Student Travel Tally Report:

School Name: Rancho

Month and Year Collected: September 2023

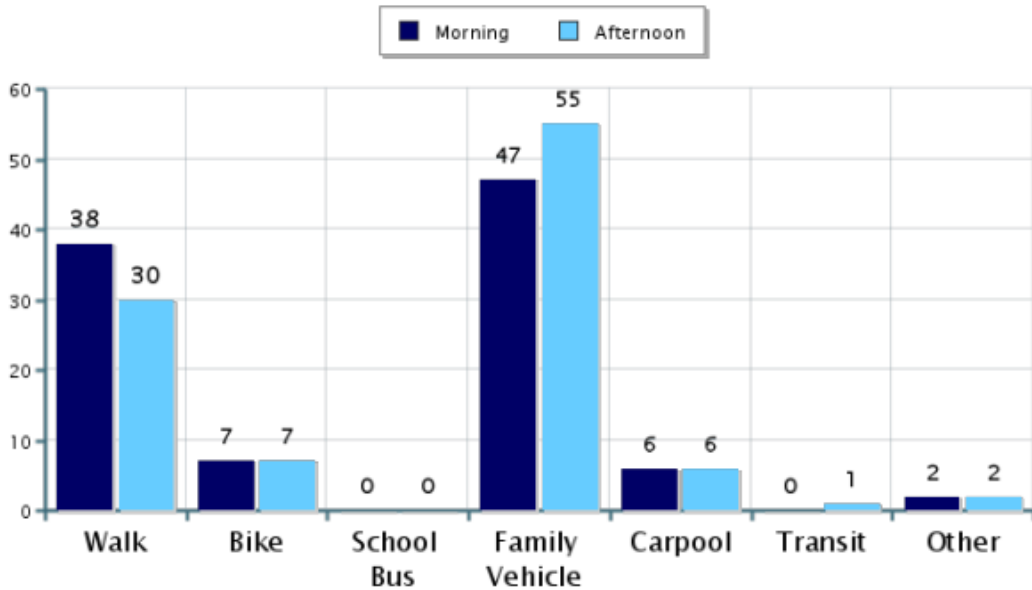
Number of

Classrooms Included in Report: 16

Number of Students: 450

This report contains information from your school's classrooms about students' trip to and from school. The data used in this report were collected using the in-class Student Travel Tally questionnaire from the National Center for Safe Routes to School.

Morning and Afternoon Travel Mode Comparison

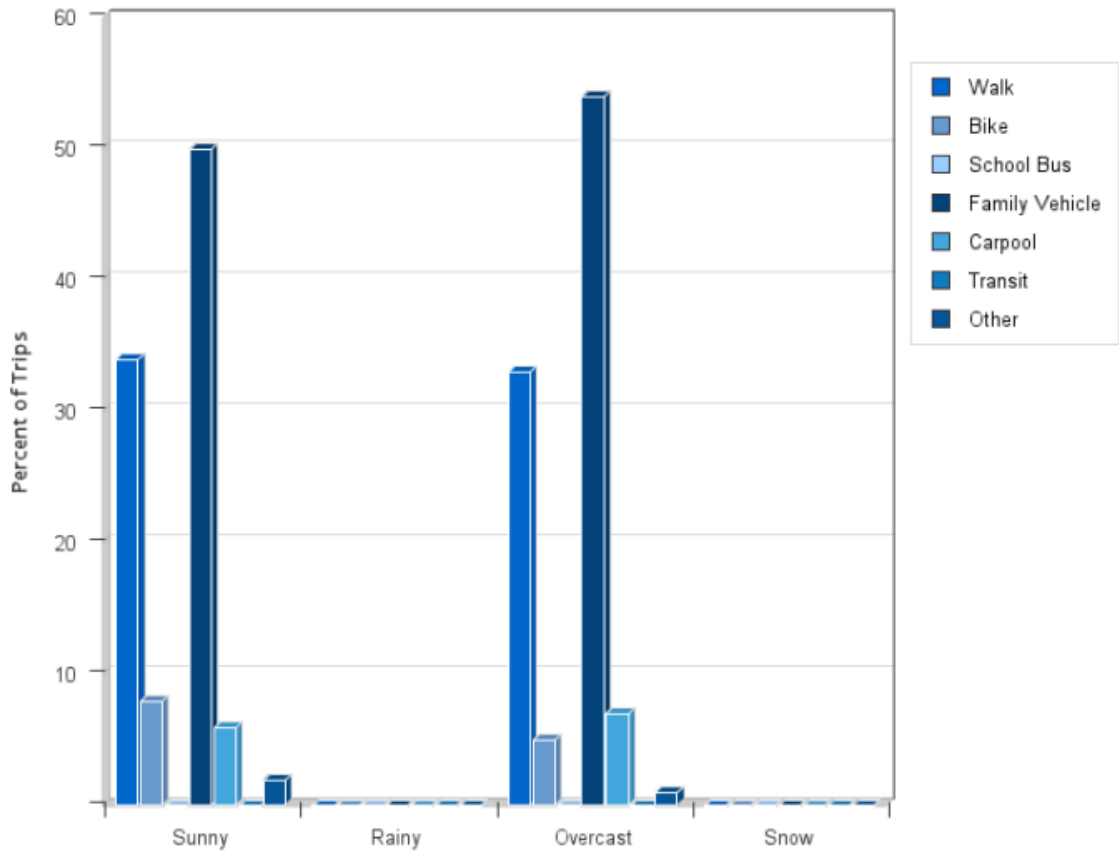


Morning and Afternoon Travel Mode Comparison

	Number of Trips	Walk	Bike	School Bus	Family Vehicle	Carpool	Transit	Other
Morning	697	38%	7%	0%	47%	6%	0%	2%
Afternoon	596	30%	7%	0%	55%	6%	0.8%	2%

Percentages may not total 100% due to rounding.

Travel Mode by Weather Conditions

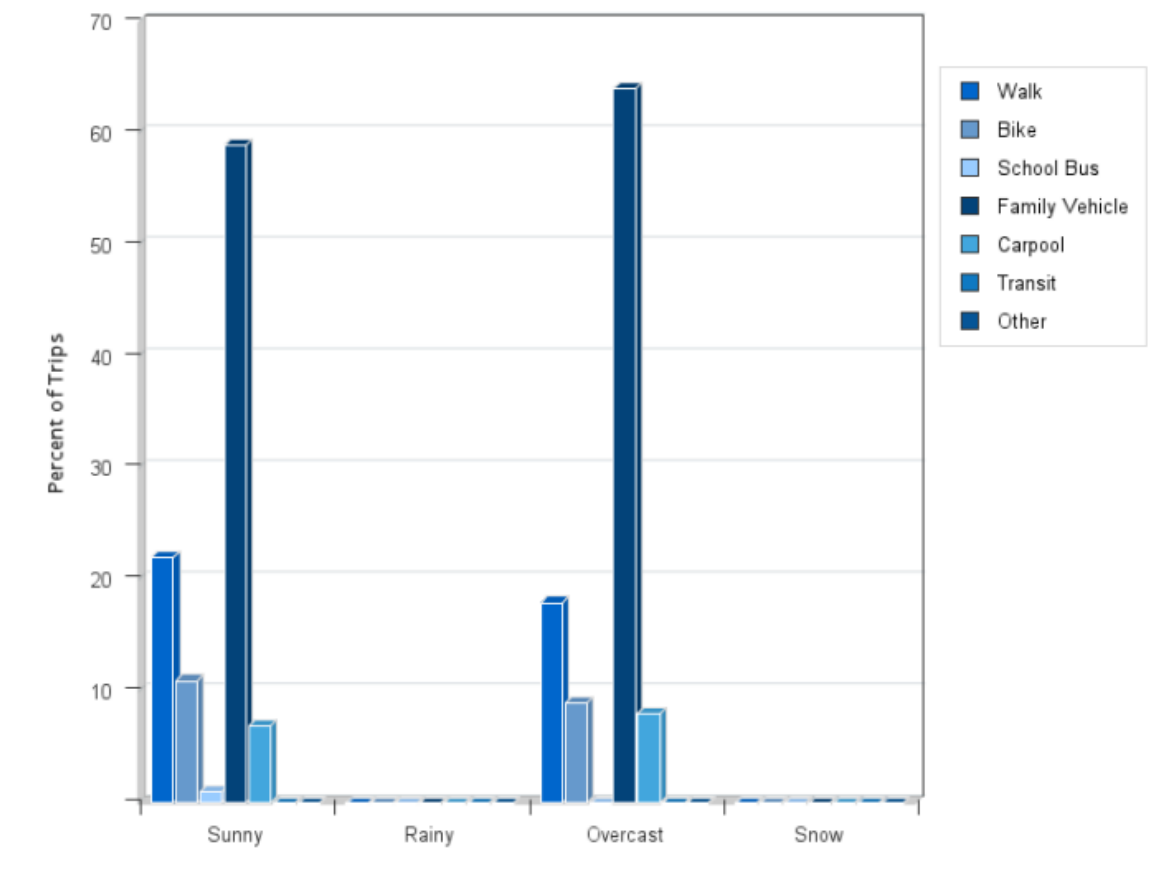


Travel Mode by Weather Condition

Weather Condition	Number of Trips	Walk	Bike	School Bus	Family Vehicle	Carpool	Transit	Other
Sunny	1081	34%	8%	0%	50%	6%	0.5%	2%
Rainy	0	0%	0%	0%	0%	0%	0%	0%
Overcast	212	33%	5%	0%	54%	7%	0%	1%
Snow	0	0%	0%	0%	0%	0%	0%	0%

Percentages may not total 100% due to rounding.

Travel Mode by Weather Conditions



Travel Mode by Weather Condition

Weather Condition	Number of Trips	Walk	Bike	School Bus	Family Vehicle	Carpool	Transit	Other
Sunny	1508	22%	11%	0.5%	59%	7%	0.1%	0.3%
Rainy	0	0%	0%	0%	0%	0%	0%	0%
Overcast	414	18%	9%	0%	64%	8%	0.5%	0%
Snow	0	0%	0%	0%	0%	0%	0%	0%

Percentages may not total 100% due to rounding.