

Student Travel Tally Report:

School Name: Novato Charter

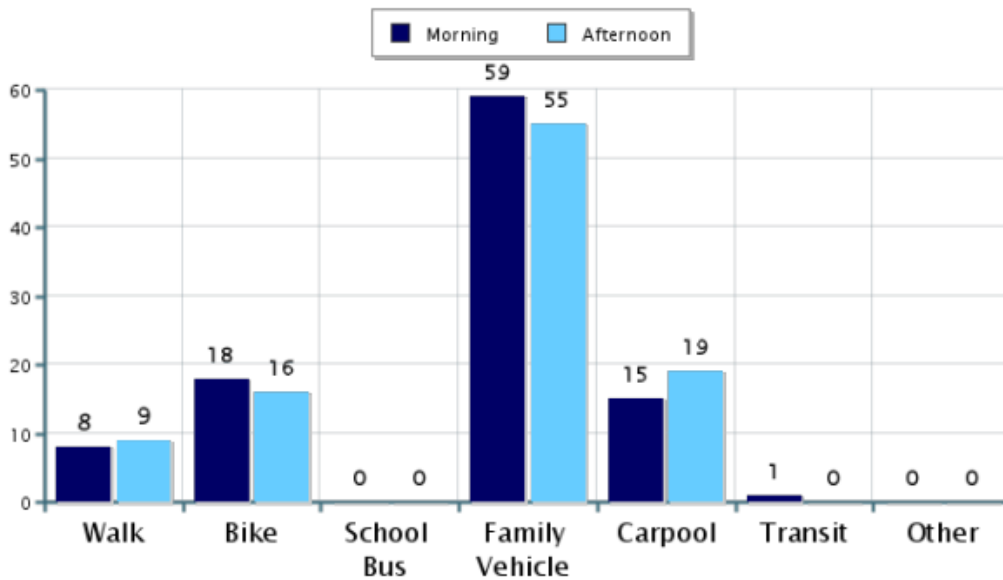
Month and Year Collected: September 2023

Number of Classrooms Included in Report: 5

Number of Students: 268

This report contains information from your school's classrooms about students' trip to and from school. The data used in this report were collected using the in-class Student Travel Tally questionnaire from the National Center for Safe Routes to School.

Morning and Afternoon Travel Mode Comparison

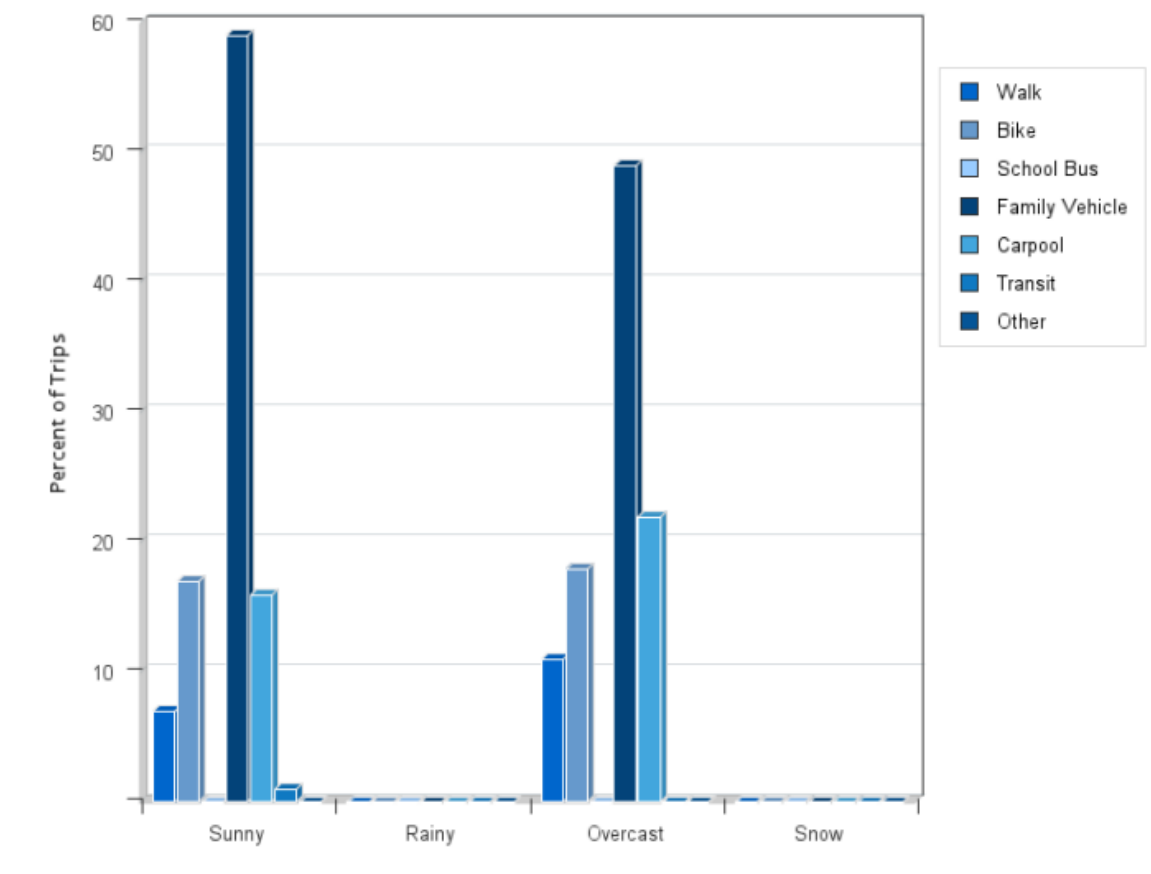


Morning and Afternoon Travel Mode Comparison

	Number of Trips	Walk	Bike	School Bus	Family Vehicle	Carpool	Transit	Other
Morning	225	8%	18%	0%	59%	15%	1%	0%
Afternoon	221	9%	16%	0%	55%	19%	0.5%	0%

Percentages may not total 100% due to rounding.

Travel Mode by Weather Conditions



Travel Mode by Weather Condition

Weather Condition	Number of Trips	Walk	Bike	School Bus	Family Vehicle	Carpool	Transit	Other
Sunny	364	7%	17%	0%	59%	16%	1%	0%
Rainy	0	0%	0%	0%	0%	0%	0%	0%
Overcast	82	11%	18%	0%	49%	22%	0%	0%
Snow	0	0%	0%	0%	0%	0%	0%	0%

Percentages may not total 100% due to rounding.