

Student Travel Tally Report:

School Name: Mary Silveria

Month and Year Collected: September 2023

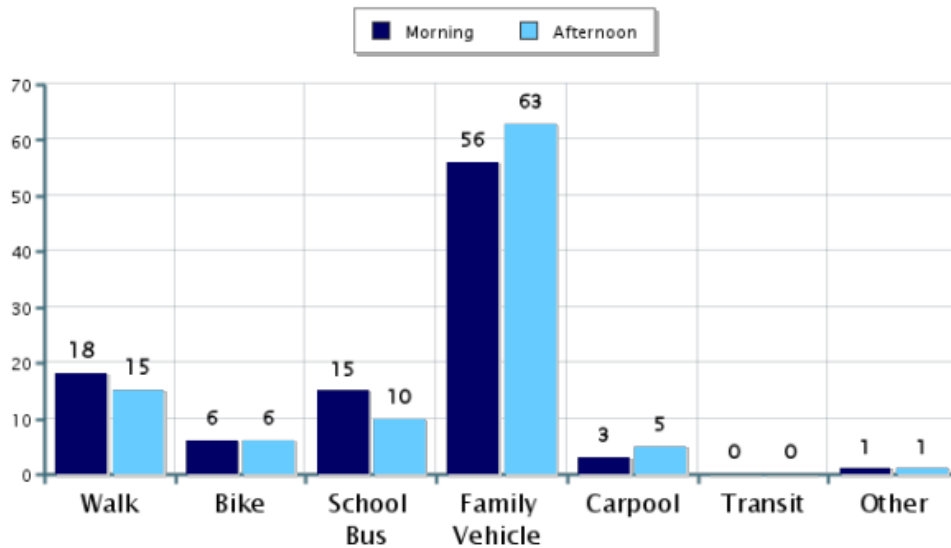
Number of

Classrooms Included in Report: 17

Number of Students: 418

This report contains information from your school's classrooms about students' trip to and from school. The data used in this report were collected using the in-class Student Travel Tally questionnaire from the National Center for Safe Routes to School.

Morning and Afternoon Travel Mode Comparison

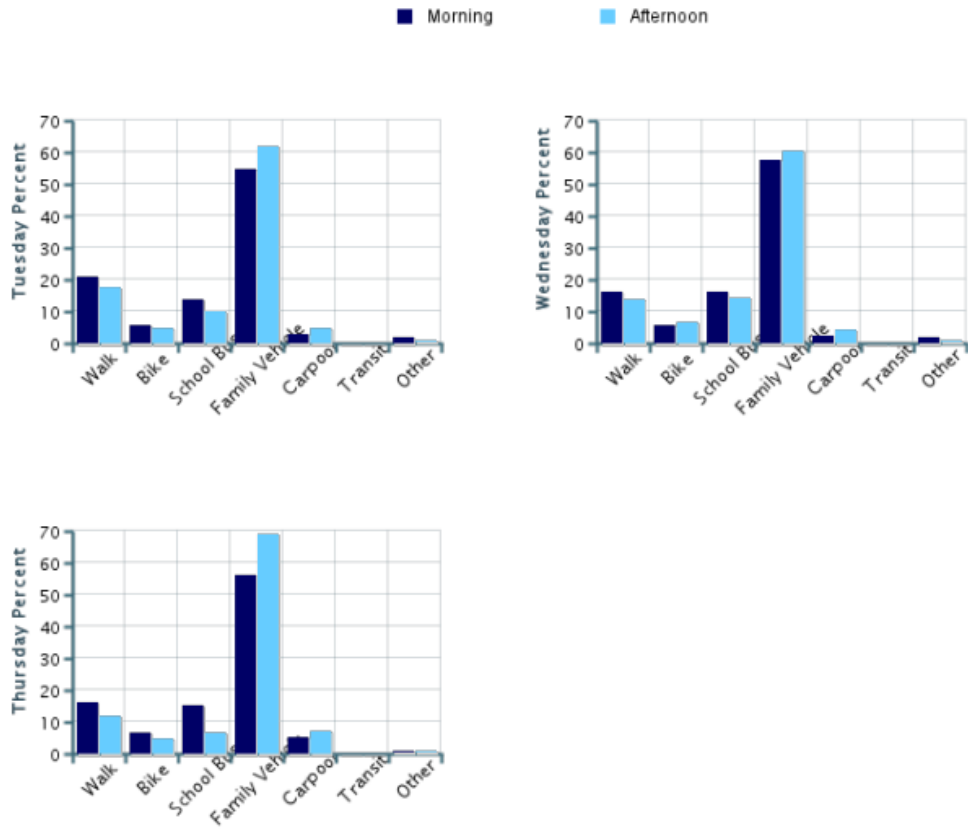


Morning and Afternoon Travel Mode Comparison

	Number of Trips	Walk	Bike	School Bus	Family Vehicle	Carpool	Transit	Other
Morning	704	18%	6%	15%	56%	3%	0%	1%
Afternoon	654	15%	6%	10%	63%	5%	0%	0.6%

Percentages may not total 100% due to rounding.

Morning and Afternoon Travel Mode Comparison by Day

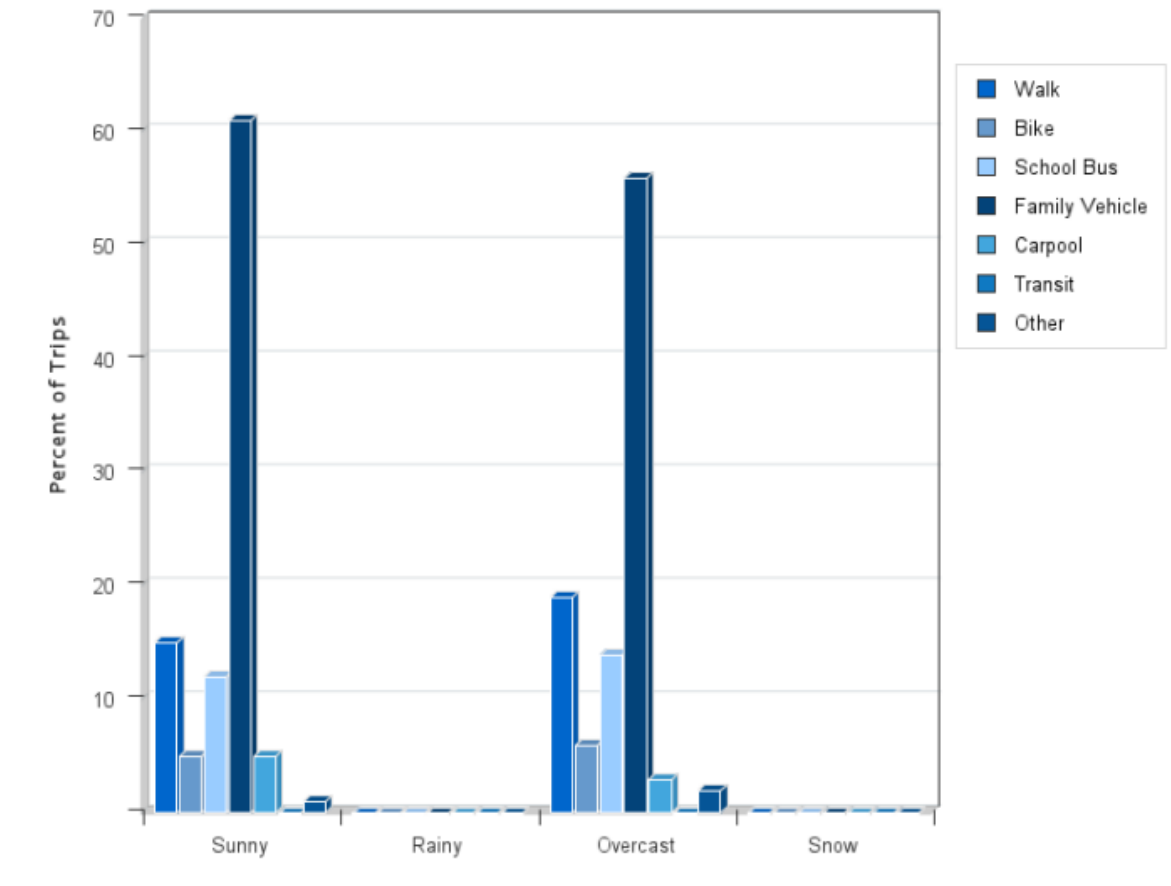


Morning and Afternoon Travel Mode Comparison by Day

	Number of Trips	Walk	Bike	School Bus	Family Vehicle	Carpool	Transit	Other
Tuesday AM	272	21%	6%	14%	55%	3%	0%	2%
Tuesday PM	245	18%	5%	10%	62%	5%	0%	0.8%
Wednesday AM	227	16%	6%	16%	58%	2%	0%	2%
Wednesday PM	224	14%	7%	14%	60%	4%	0%	0.4%
Thursday AM	205	16%	7%	15%	56%	5%	0%	0.5%
Thursday PM	185	12%	5%	6%	69%	7%	0%	0.5%

Percentages may not total 100% due to rounding.

Travel Mode by Weather Conditions



Travel Mode by Weather Condition

Weather Condition	Number of Trips	Walk	Bike	School Bus	Family Vehicle	Carpool	Transit	Other
Sunny	982	15%	5%	12%	61%	5%	0%	0.7%
Rainy	0	0%	0%	0%	0%	0%	0%	0%
Overcast	376	19%	6%	14%	56%	3%	0%	2%
Snow	0	0%	0%	0%	0%	0%	0%	0%

Percentages may not total 100% due to rounding.