

Student Travel Tally Report:

School Name: Manor

Month and Year Collected: September 2023

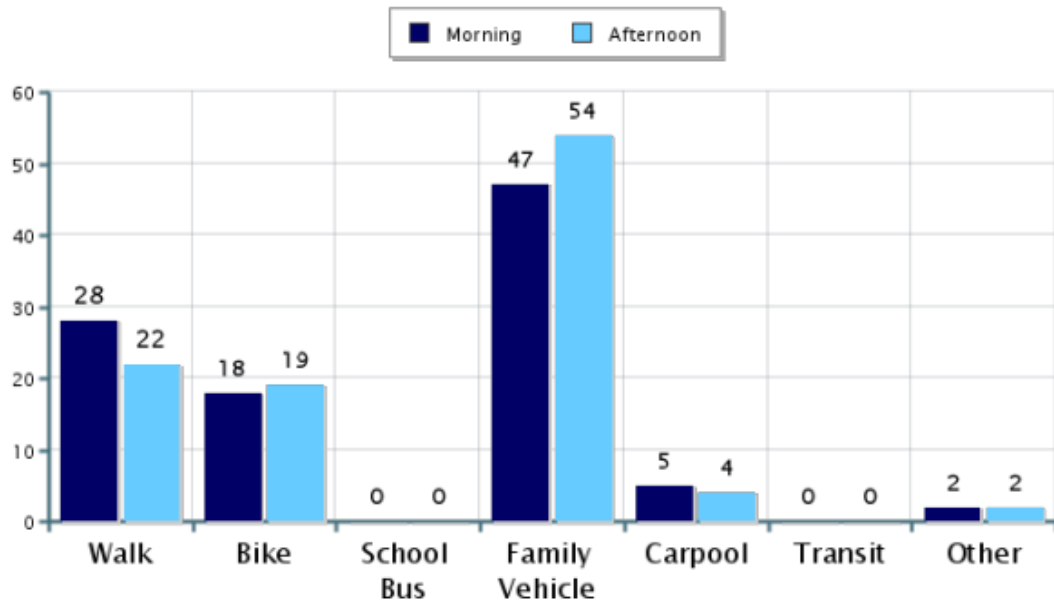
Number of

Classrooms Included in Report: 4

Number of Students: 231

This report contains information from your school's classrooms about students' trip to and from school. The data used in this report were collected using the in-class Student Travel Tally questionnaire from the National Center for Safe Routes to School.

Morning and Afternoon Travel Mode Comparison

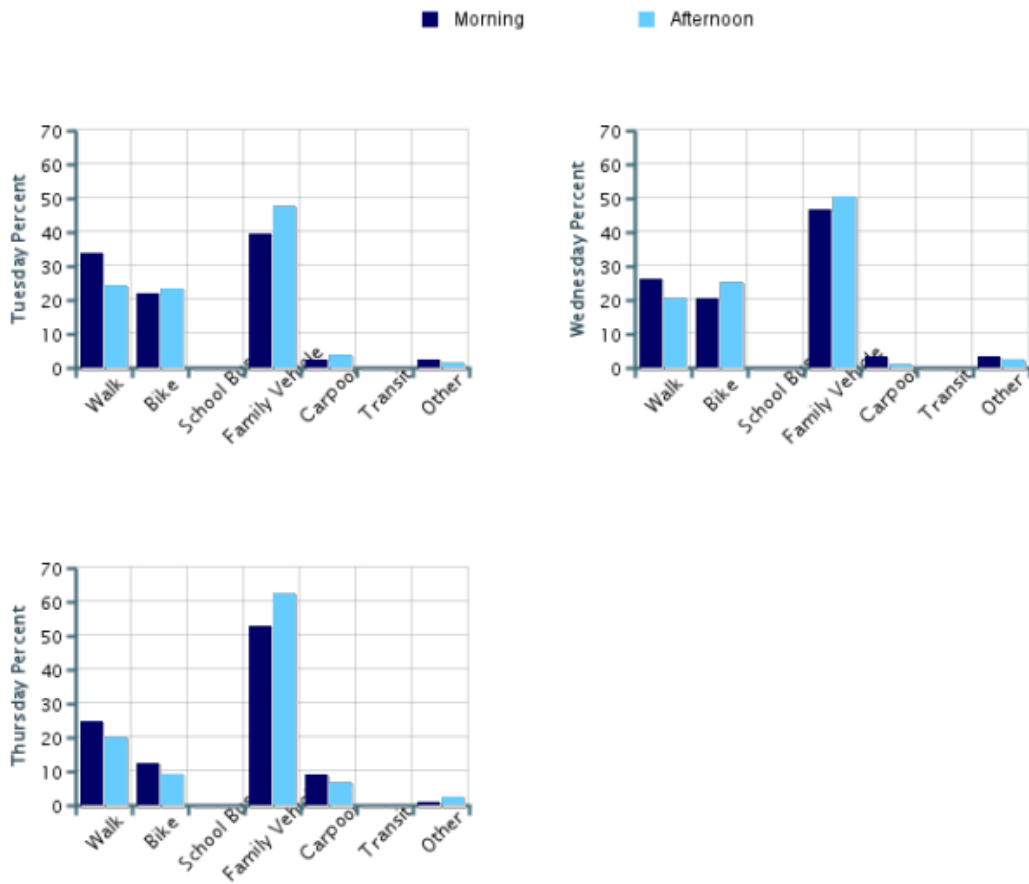


Morning and Afternoon Travel Mode Comparison

	Number of Trips	Walk	Bike	School Bus	Family Vehicle	Carpool	Transit	Other
Morning	260	28%	18%	0%	47%	5%	0%	2%
Afternoon	259	22%	19%	0%	54%	4%	0%	2%

Percentages may not total 100% due to rounding.

Morning and Afternoon Travel Mode Comparison by Day

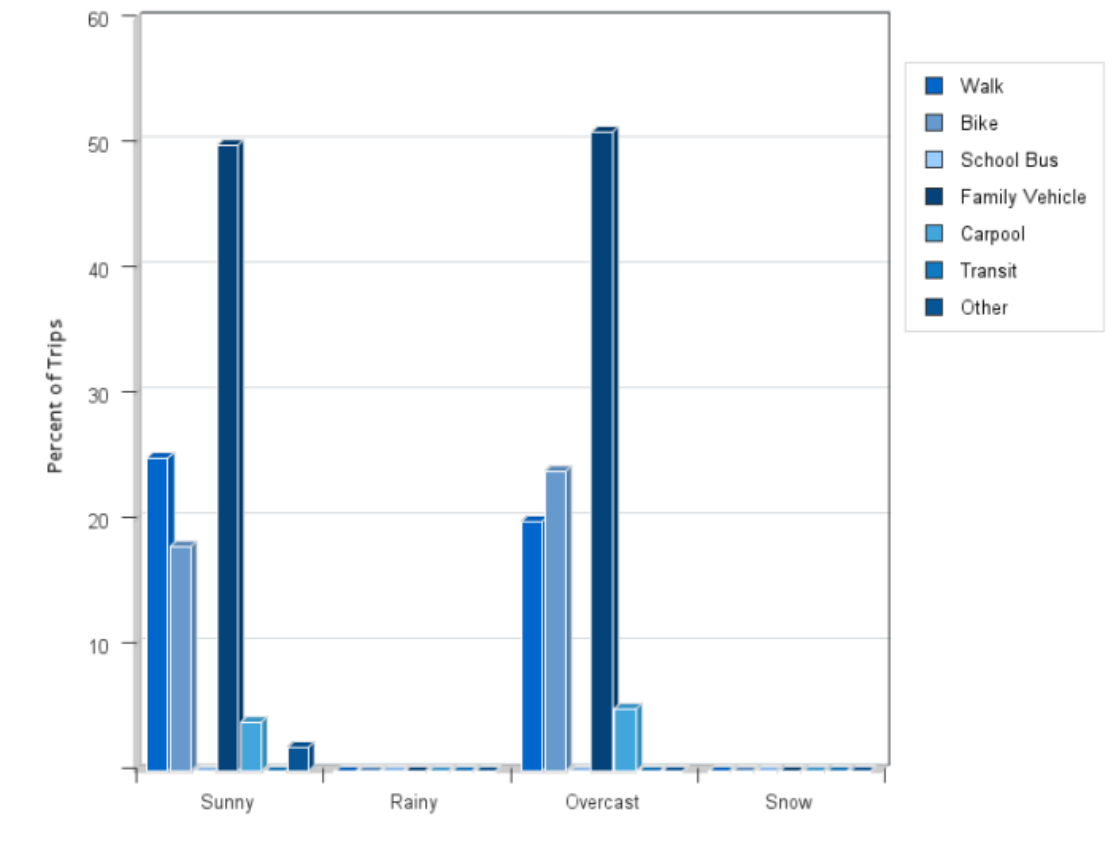


Morning and Afternoon Travel Mode Comparison by Day

	Number of Trips	Walk	Bike	School Bus	Family Vehicle	Carpool	Transit	Other
Tuesday AM	83	34%	22%	0%	40%	2%	0%	2%
Tuesday PM	82	24%	23%	0%	48%	4%	0%	1%
Wednesday AM	88	26%	20%	0%	47%	3%	0%	3%
Wednesday PM	87	21%	25%	0%	51%	1%	0%	2%
Thursday AM	89	25%	12%	0%	53%	9%	0%	1%
Thursday PM	90	20%	9%	0%	62%	7%	0%	2%

Percentages may not total 100% due to rounding.

Travel Mode by Weather Conditions



Travel Mode by Weather Condition

Weather Condition	Number of Trips	Walk	Bike	School Bus	Family Vehicle	Carpool	Transit	Other
Sunny	478	25%	18%	0%	50%	4%	0%	2%
Rainy	0	0%	0%	0%	0%	0%	0%	0%
Overcast	41	20%	24%	0%	51%	5%	0%	0%
Snow	0	0%	0%	0%	0%	0%	0%	0%

Percentages may not total 100% due to rounding.