

# Student Travel Tally Report:

School Name: Hall

Month and Year Collected: September 2023

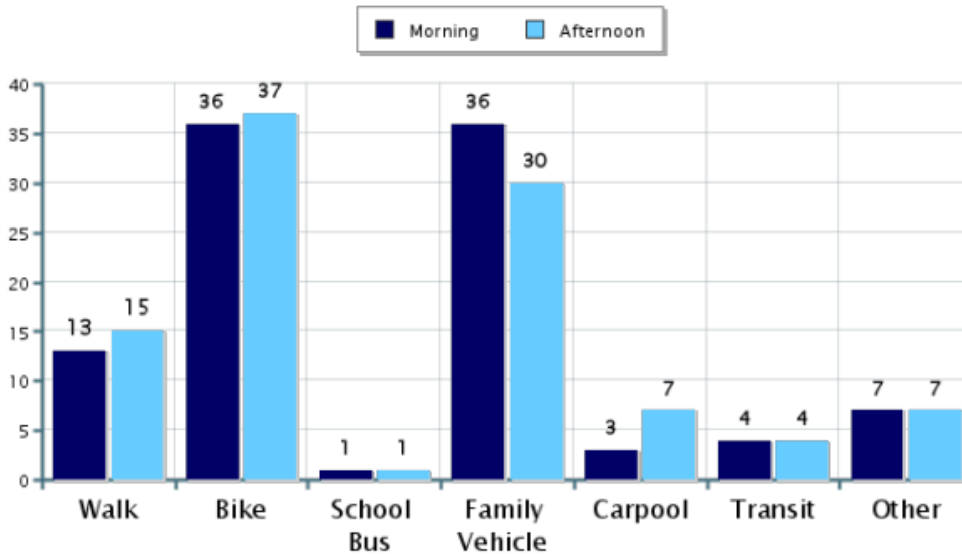
Number of

Classrooms Included in Report: 19

Number of Students: 450

This report contains information from your school's classrooms about students' trip to and from school. The data used in this report were collected using the in-class Student Travel Tally questionnaire from the National Center for Safe Routes to School.

## Morning and Afternoon Travel Mode Comparison

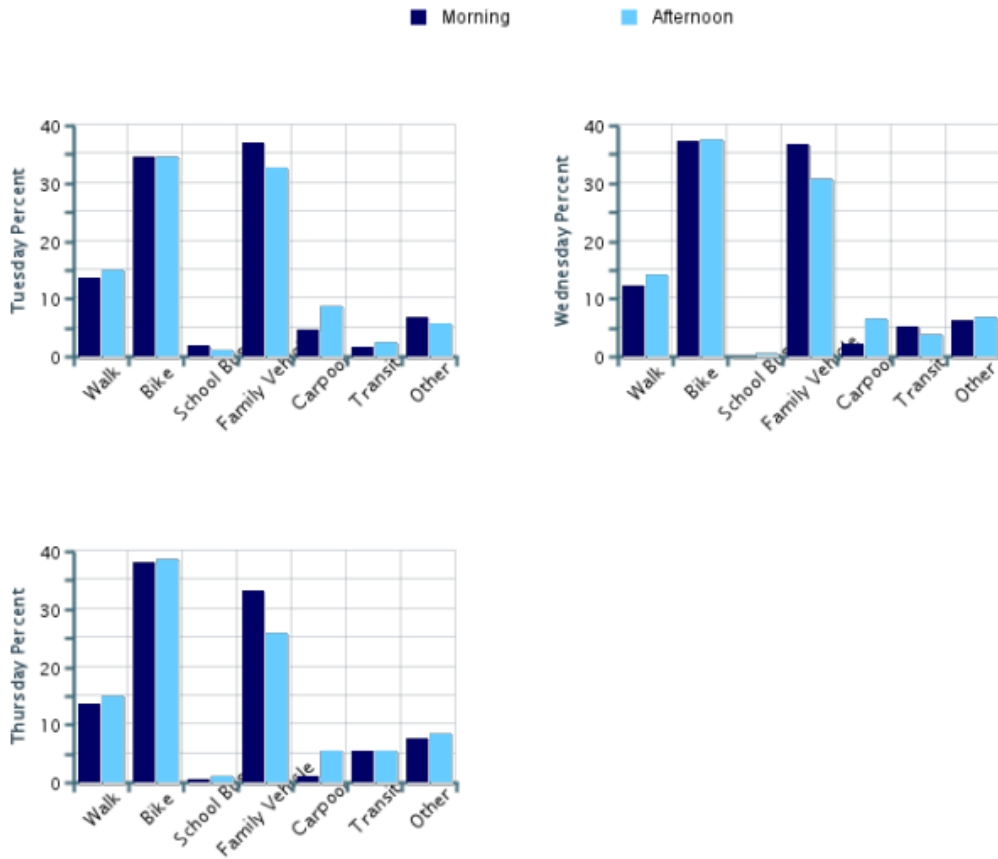


## Morning and Afternoon Travel Mode Comparison

	Number of Trips	Walk	Bike	School Bus	Family Vehicle	Carpool	Transit	Other
Morning	667	13%	36%	0.9%	36%	3%	4%	7%
Afternoon	606	15%	37%	0.8%	30%	7%	4%	7%

Percentages may not total 100% due to rounding.

## Morning and Afternoon Travel Mode Comparison by Day

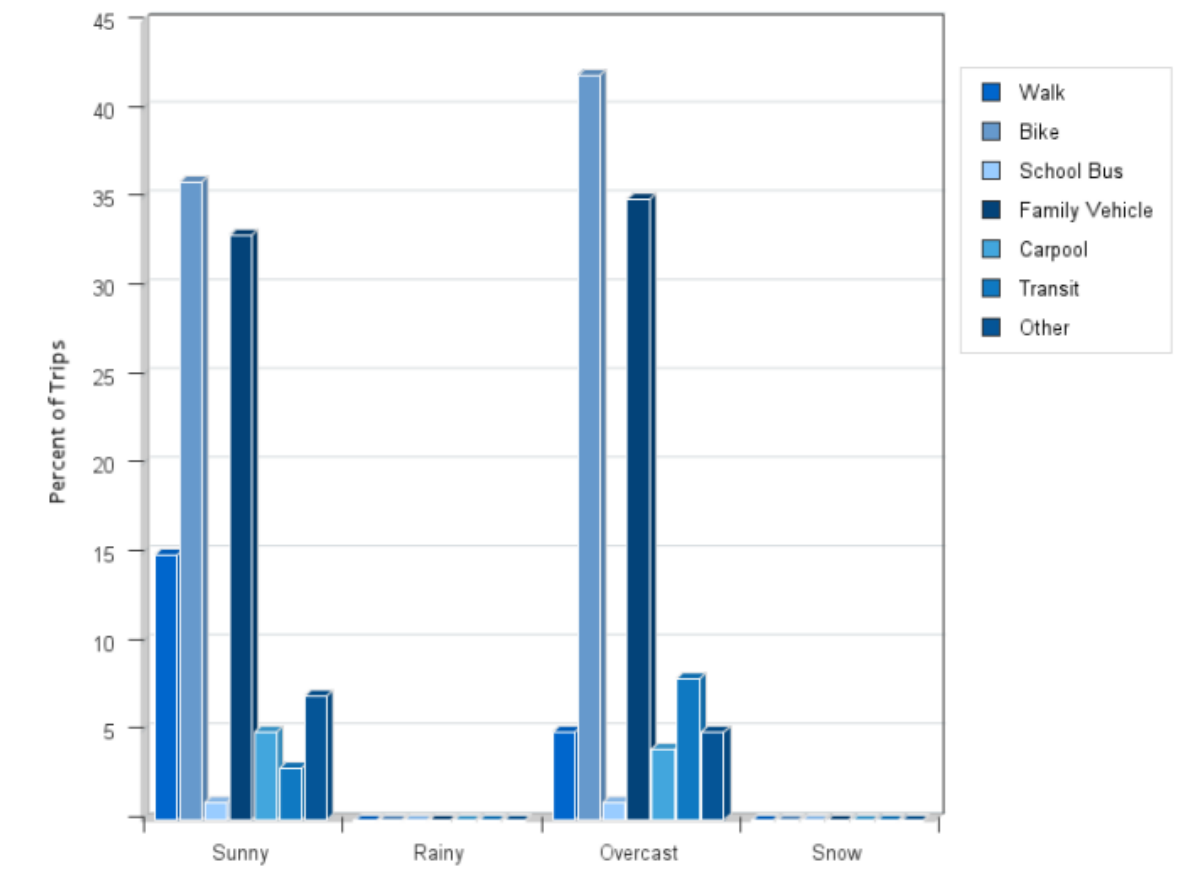


## Morning and Afternoon Travel Mode Comparison by Day

	Number of Trips	Walk	Bike	School Bus	Family Vehicle	Carpool	Transit	Other
Tuesday AM	263	14%	35%	2%	37%	5%	2%	7%
Tuesday PM	206	15%	34%	1.0%	33%	9%	2%	6%
Wednesday AM	236	12%	37%	0%	37%	2%	5%	6%
Wednesday PM	234	14%	38%	0.4%	31%	6%	4%	7%
Thursday AM	168	14%	38%	0.6%	33%	1%	5%	8%
Thursday PM	166	15%	39%	1%	26%	5%	5%	8%

Percentages may not total 100% due to rounding.

## Travel Mode by Weather Conditions



## Travel Mode by Weather Condition

Weather Condition	Number of Trips	Walk	Bike	School Bus	Family Vehicle	Carpool	Transit	Other
Sunny	1117	15%	36%	0.9%	33%	5%	3%	7%
Rainy	0	0%	0%	0%	0%	0%	0%	0%
Overcast	156	5%	42%	0.6%	35%	4%	8%	5%
Snow	0	0%	0%	0%	0%	0%	0%	0%

Percentages may not total 100% due to rounding.

