

Student Travel Tally Report:

School Name: Edna McGuire

Month and Year Collected: September 2023

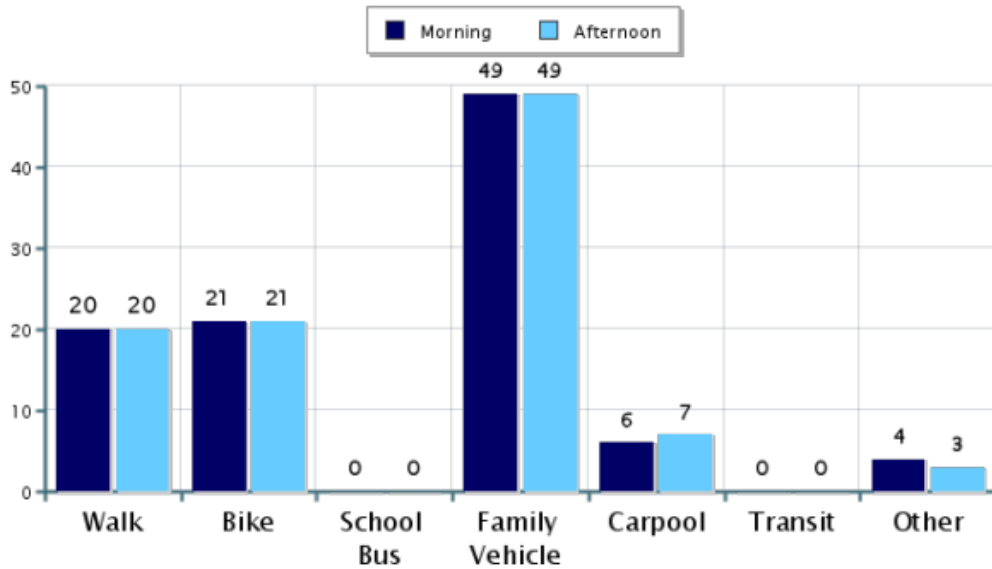
Number of

Classrooms Included in Report: 22

Number of Students: 450

This report contains information from your school's classrooms about students' trip to and from school. The data used in this report were collected using the in-class Student Travel Tally questionnaire from the National Center for Safe Routes to School.

Morning and Afternoon Travel Mode Comparison

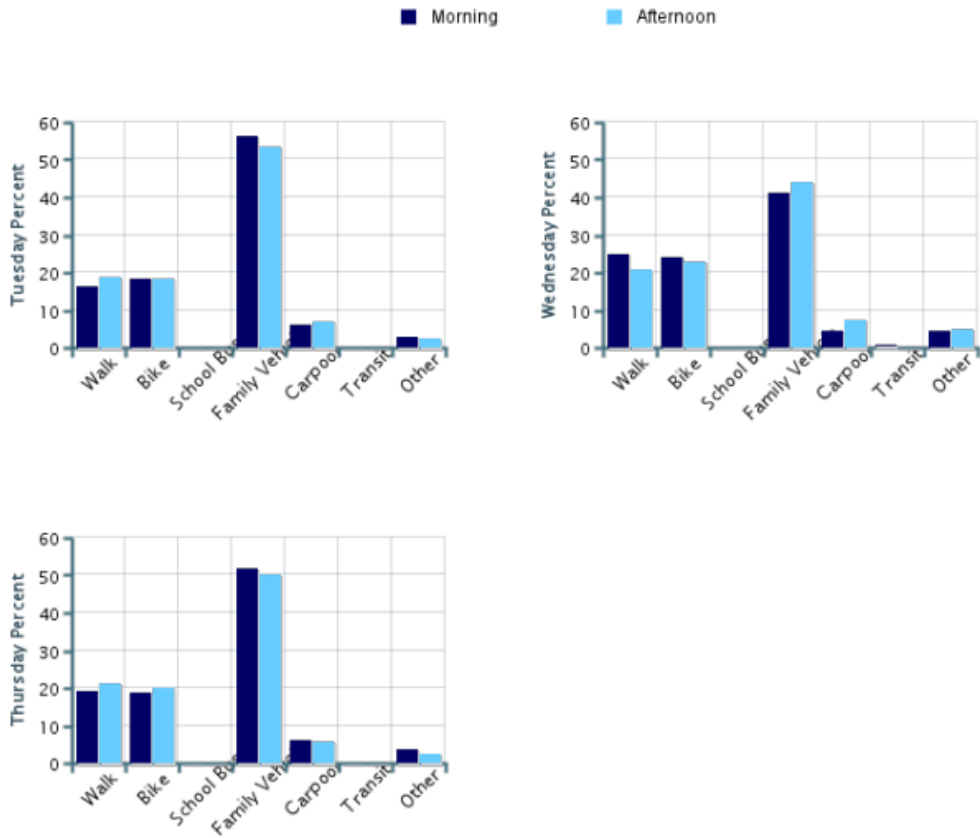


Morning and Afternoon Travel Mode Comparison

	Number of Trips	Walk	Bike	School Bus	Family Vehicle	Carpool	Transit	Other
Morning	991	20%	21%	0%	49%	6%	0.1%	4%
Afternoon	942	20%	21%	0%	49%	7%	0%	3%

Percentages may not total 100% due to rounding.

Morning and Afternoon Travel Mode Comparison by Day

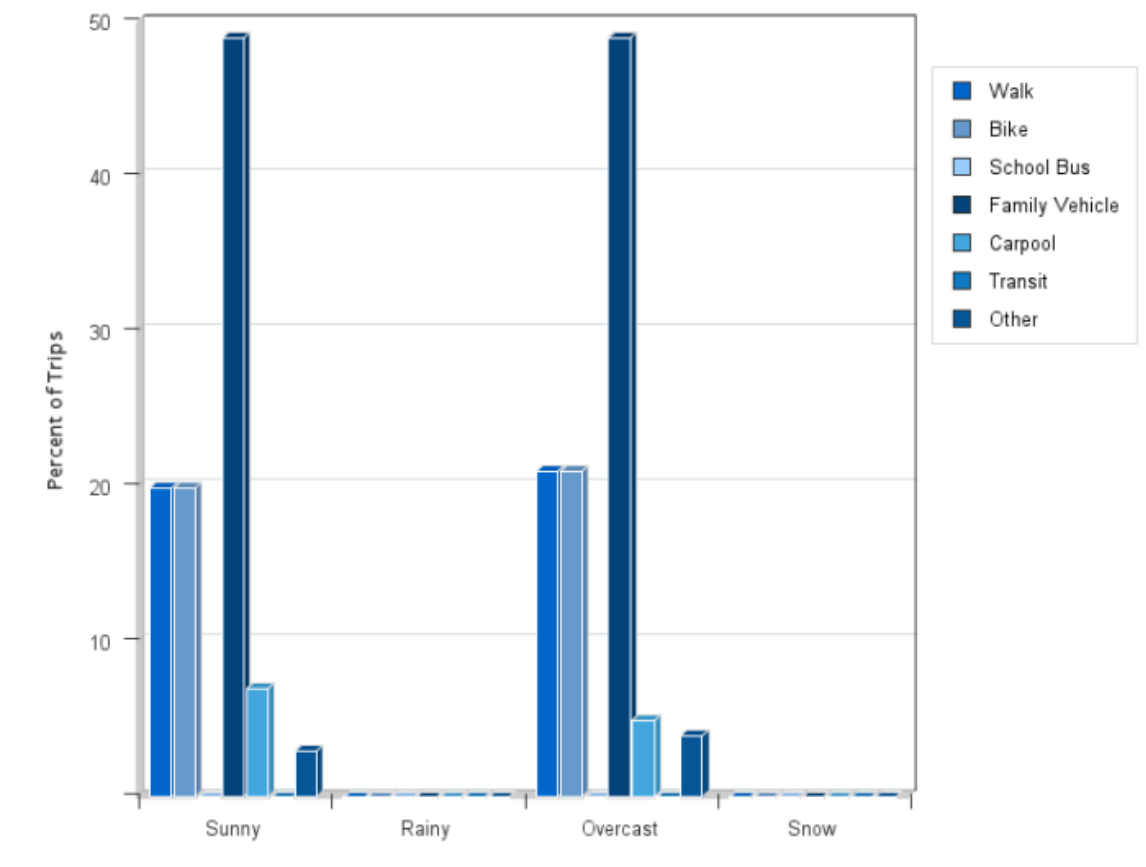


Morning and Afternoon Travel Mode Comparison by Day

	Number of Trips	Walk	Bike	School Bus	Family Vehicle	Carpool	Transit	Other
Tuesday AM	330	16%	18%	0%	56%	6%	0%	3%
Tuesday PM	309	19%	18%	0%	53%	7%	0%	2%
Wednesday AM	372	25%	24%	0%	41%	5%	0.3%	5%
Wednesday PM	367	21%	23%	0%	44%	7%	0%	5%
Thursday AM	289	19%	19%	0%	52%	6%	0%	4%
Thursday PM	266	21%	20%	0%	50%	6%	0%	3%

Percentages may not total 100% due to rounding.

Travel Mode by Weather Conditions

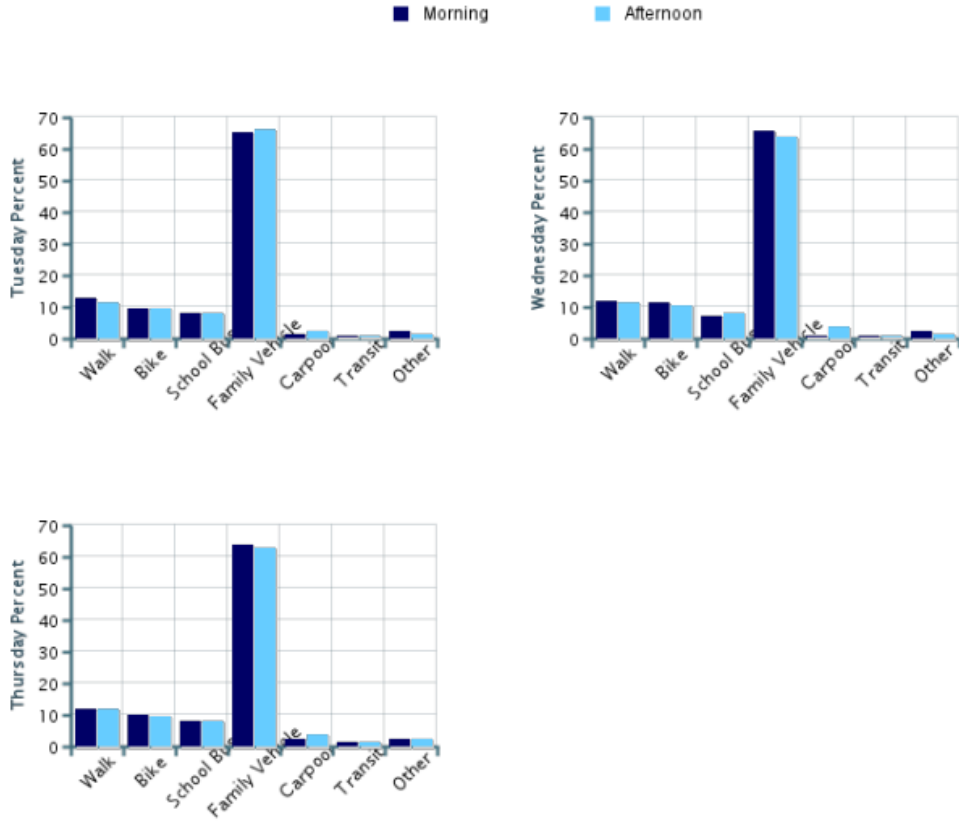


Travel Mode by Weather Condition

Weather Condition	Number of Trips	Walk	Bike	School Bus	Family Vehicle	Carpool	Transit	Other
Sunny	1203	20%	20%	0%	49%	7%	0.1%	3%
Rainy	0	0%	0%	0%	0%	0%	0%	0%
Overcast	730	21%	21%	0%	49%	5%	0%	4%
Snow	0	0%	0%	0%	0%	0%	0%	0%

Percentages may not total 100% due to rounding.

Morning and Afternoon Travel Mode Comparison by Day

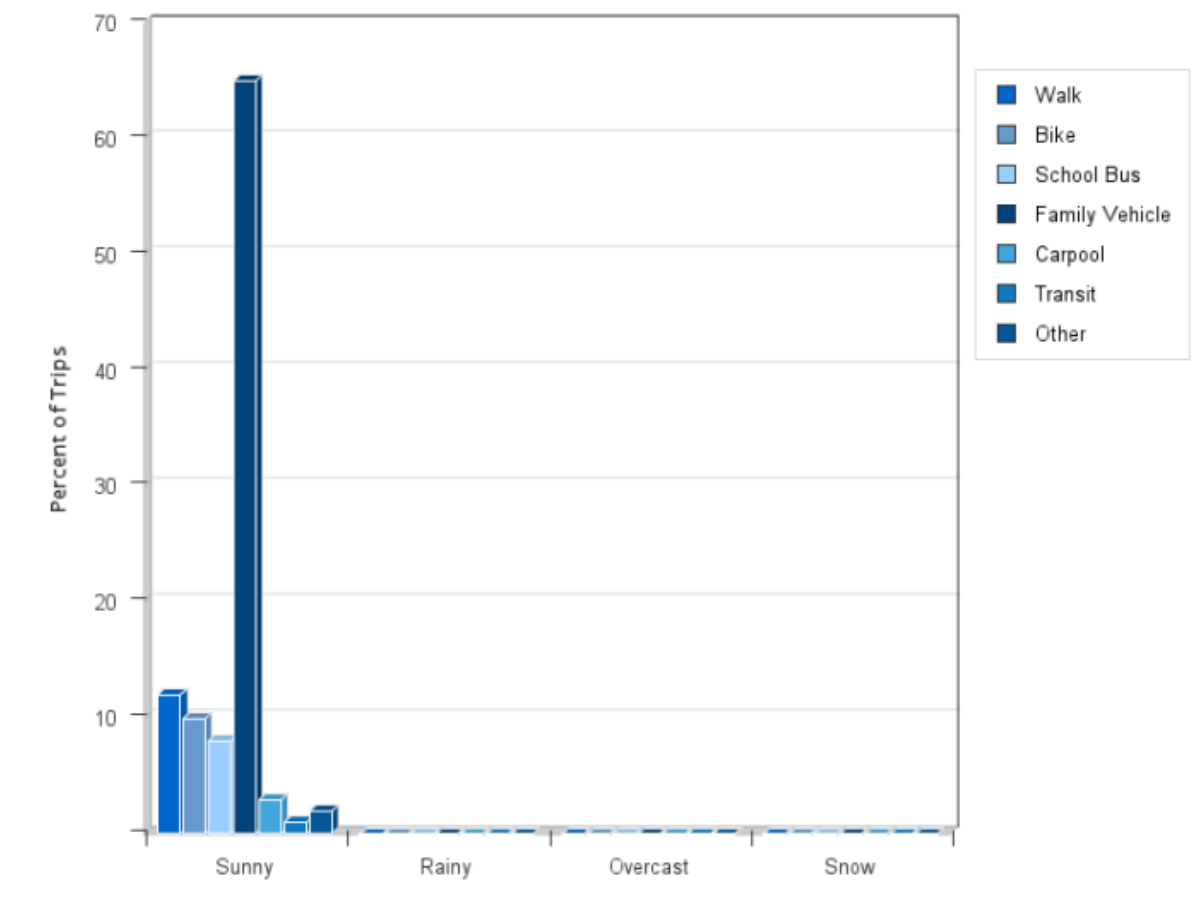


Morning and Afternoon Travel Mode Comparison by Day

	Number of Trips	Walk	Bike	School Bus	Family Vehicle	Carpool	Transit	Other
Tuesday AM	126	13%	10%	8%	65%	2%	0.8%	2%
Tuesday PM	125	11%	10%	8%	66%	2%	0.8%	2%
Wednesday AM	125	12%	11%	7%	66%	0.8%	0.8%	2%
Wednesday PM	124	11%	10%	8%	64%	4%	0.8%	2%
Thursday AM	127	12%	10%	8%	64%	2%	2%	2%
Thursday PM	126	12%	10%	8%	63%	4%	2%	2%

Percentages may not total 100% due to rounding.

Travel Mode by Weather Conditions

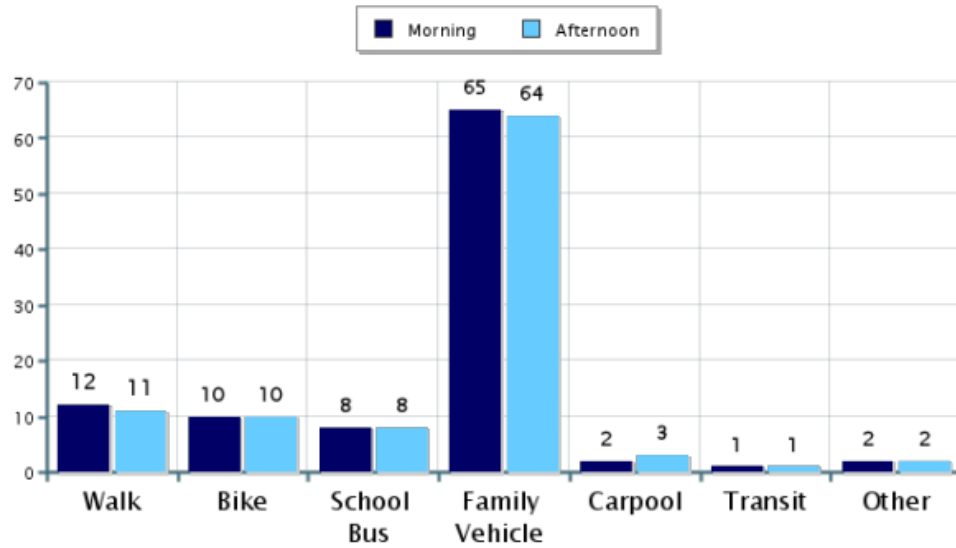


Travel Mode by Weather Condition

Weather Condition	Number of Trips	Walk	Bike	School Bus	Family Vehicle	Carpool	Transit	Other
Sunny	753	12%	10%	8%	65%	3%	1%	2%
Rainy	0	0%	0%	0%	0%	0%	0%	0%
Overcast	0	0%	0%	0%	0%	0%	0%	0%
Snow	0	0%	0%	0%	0%	0%	0%	0%

Percentages may not total 100% due to rounding.

Morning and Afternoon Travel Mode Comparison



Morning and Afternoon Travel Mode Comparison

	Number of Trips	Walk	Bike	School Bus	Family Vehicle	Carpool	Transit	Other
Morning	378	12%	10%	8%	65%	2%	1%	2%
Afternoon	375	11%	10%	8%	64%	3%	1%	2%

Percentages may not total 100% due to rounding.

