

Student Travel Tally Report:

School Name: Brookside

Month and Year Collected: September 2023

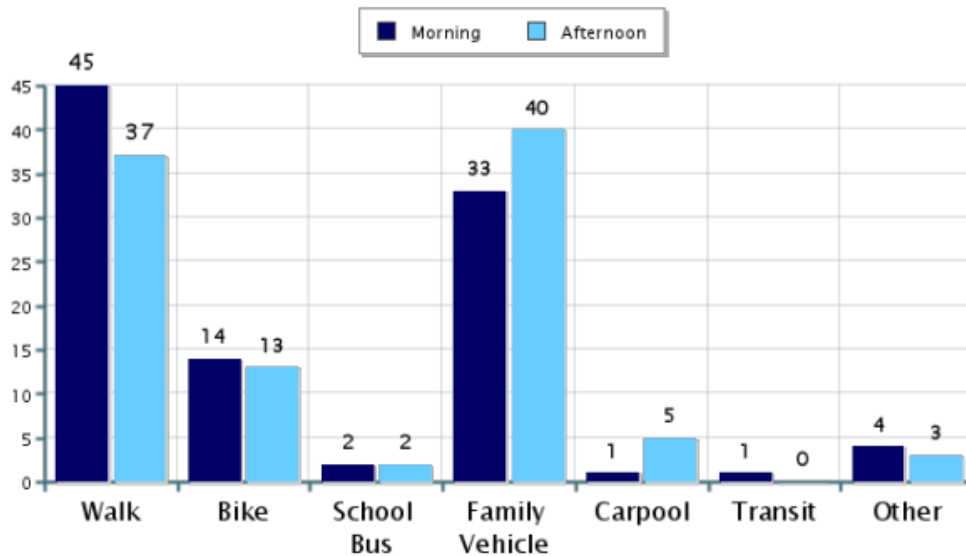
Number of

Classrooms Included in Report: 17

Number of Students: 292

This report contains information from your school's classrooms about students' trip to and from school. The data used in this report were collected using the in-class Student Travel Tally questionnaire from the National Center for Safe Routes to School.

Morning and Afternoon Travel Mode Comparison

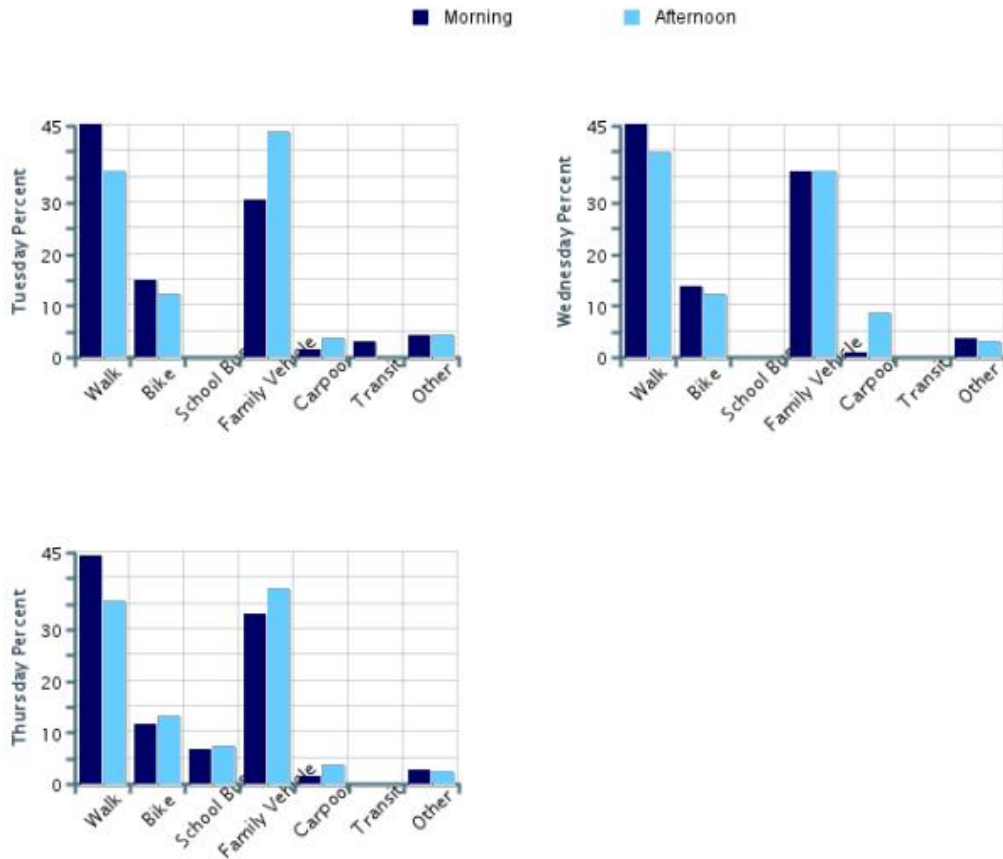


Morning and Afternoon Travel Mode Comparison

	Number of Trips	Walk	Bike	School Bus	Family Vehicle	Carpool	Transit	Other
Morning	664	45%	14%	2%	33%	1%	1%	4%
Afternoon	598	37%	13%	2%	40%	5%	0%	3%

Percentages may not total 100% due to rounding.

Morning and Afternoon Travel Mode Comparison by Day

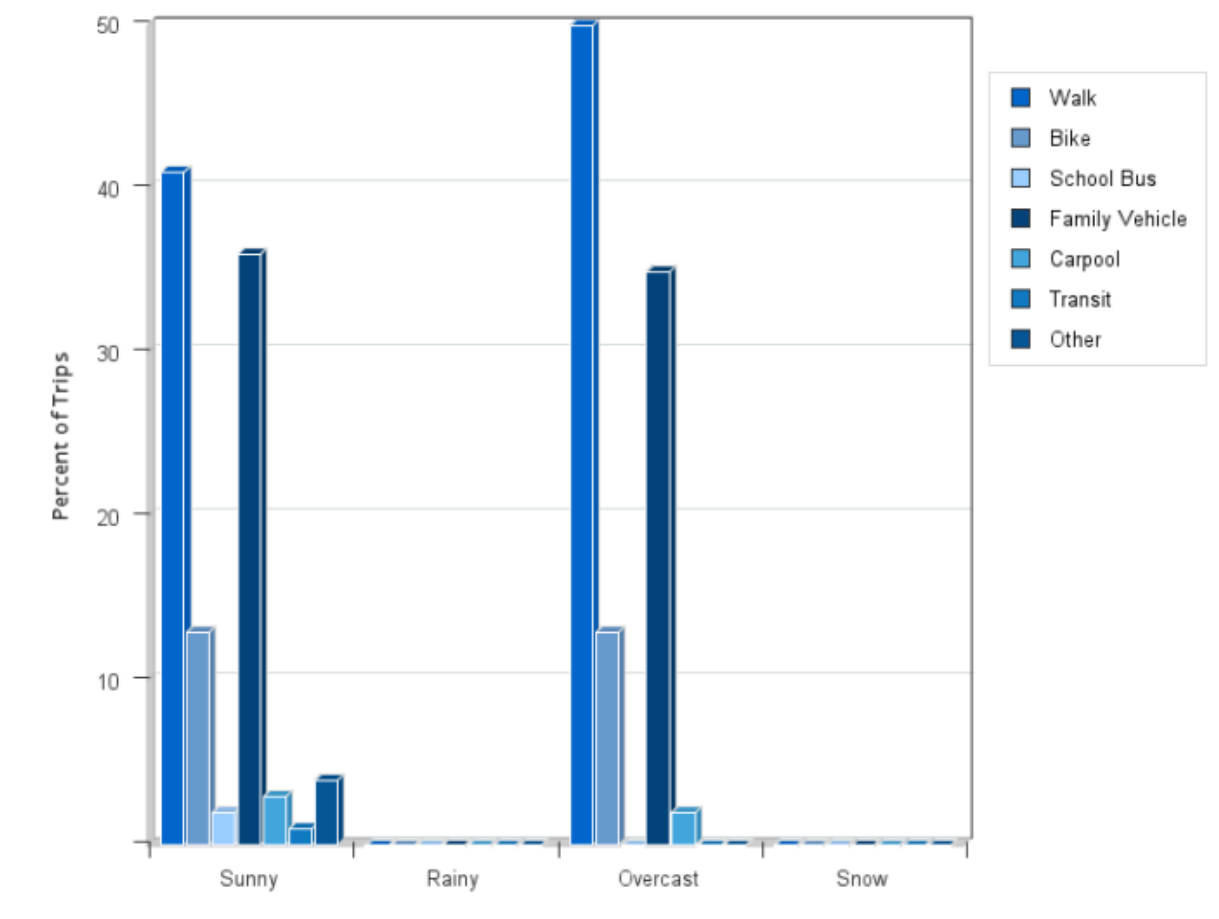


Morning and Afternoon Travel Mode Comparison by Day

	Number of Trips	Walk	Bike	School Bus	Family Vehicle	Carpool	Transit	Other
Tuesday AM	285	46%	15%	0%	31%	1%	3%	4%
Tuesday PM	236	36%	12%	0%	44%	4%	0%	4%
Wednesday AM	197	46%	14%	0%	36%	1%	0%	4%
Wednesday PM	196	40%	12%	0%	36%	9%	0%	3%
Thursday AM	182	45%	12%	7%	33%	2%	0%	3%
Thursday PM	166	36%	13%	7%	38%	4%	0%	2%

Percentages may not total 100% due to rounding.

Travel Mode by Weather Conditions



Travel Mode by Weather Condition

Weather Condition	Number of Trips	Walk	Bike	School Bus	Family Vehicle	Carpool	Transit	Other
Sunny	1200	41%	13%	2%	36%	3%	0.8%	4%
Rainy	0	0%	0%	0%	0%	0%	0%	0%
Overcast	62	50%	13%	0%	35%	2%	0%	0%
Snow	0	0%	0%	0%	0%	0%	0%	0%

Percentages may not total 100% due to rounding.