

# San Rafael Transit Center & Environs

**Jurisdiction:** Caltrans/San Rafael

**Location of Caltrans Barrier to Bike/Ped Access:** 2<sup>nd</sup>, 3<sup>rd</sup>, 4<sup>th</sup>, 5<sup>th</sup>, & Mission under Hwy 101, plus highway on/offramps

**Type of Barrier:** Narrow, obstructed sidewalks, no marked or separated facility for cyclists in a heavily congested area, dark and uninviting, dangerous intersections.

**Needs:** Safe and separate facilities for cyclists and pedestrians (Class I, IV), lighting, striping, signage, signal phasing. SWITTERS Data=192 bike and ped injury crashes within 1/2 mile radius of Heatherton/3<sup>rd</sup>.

**Connections:** New facilities needed to seamlessly connect neighborhoods, schools and businesses east and west of the freeway, to and between:

- Mahon Creek Pathway
- Transit Center, SMART Station
- San Rafael High, Dominican, Coleman, etc.
- Montecito Shopping Center
- Canal Neighborhood
- Points East (China Camp State Park)
- Points West (San Anselmo, Fairfax, etc.)

**Part of Regional SF Bay Trail:** Yes

**Feasibility Study Needed:** Yes

**Disadvantaged Community Served?** Yes, Canal



4<sup>th</sup> St. San Rafael under Hwy 101 looking east. Dark, narrow, obstructed sidewalk, no bike lane or path.

## Bellam Blvd & I-580

**Jurisdiction:** Caltrans/San Rafael

**Location of Caltrans Barrier to Bike/Ped Access:** Bellam Blvd./ I-580

**Type of Barrier:** Narrow, obstructed sidewalks, no marked or separated facility for cyclists in a heavily congested area, free right turns onto freeway, undercrossing is dark and uninviting, dangerous intersections.

**Needs:** Safe and separate facilities for cyclists and pedestrians (Class I, IV), lighting, striping, signage, signal phasing.

**Connections:** New facilities needed to seamlessly connect neighborhoods, schools and businesses east and west of the freeway, to and between:

- Davidson Middle School
- Canal Neighborhood
- CalPark Hill Tunnel
- Upcoming 2<sup>nd</sup> to Andersen Path
- SF Bay Trail at Shoreline Park

**Part of Regional SF Bay Trail:** Yes

**Feasibility Study Needed:** Yes

**Disadvantaged Community Served?** Yes, Canal



*Bellam Blvd. & I-580 looking east. Narrow, obstructed sidewalks, no bicycle facility, heavy traffic, free right-hand turns onto freeway, undercrossing dark and narrow.*



# North San Pedro Road & Hwy 101

**Jurisdiction:** Caltrans/San Rafael

**Location of Caltrans Barrier to Bike/Ped**

**Access:** N. San Pedro Rd., Hwy 101, on/off ramps

**Type of Barrier:** Narrow substandard path exists immediately under freeway, but too short. Free right turns onto freeway, no pedestrian facilities. Lack of connectivity on either side of the pathway, merges to hi-speed off-ramp.

**Needs:** Safe and separate facilities for cyclists and pedestrians (Class I, IV), lighting, striping, signage, signal phasing.

**Connections:** New facilities needed to seamlessly connect neighborhoods, schools and businesses east and west of the freeway, to and between:

- Civic Center
- Civic Center SMART Station
- Santa Venitia & Los Ranchitos schools and neighborhoods
- China Camp State Park

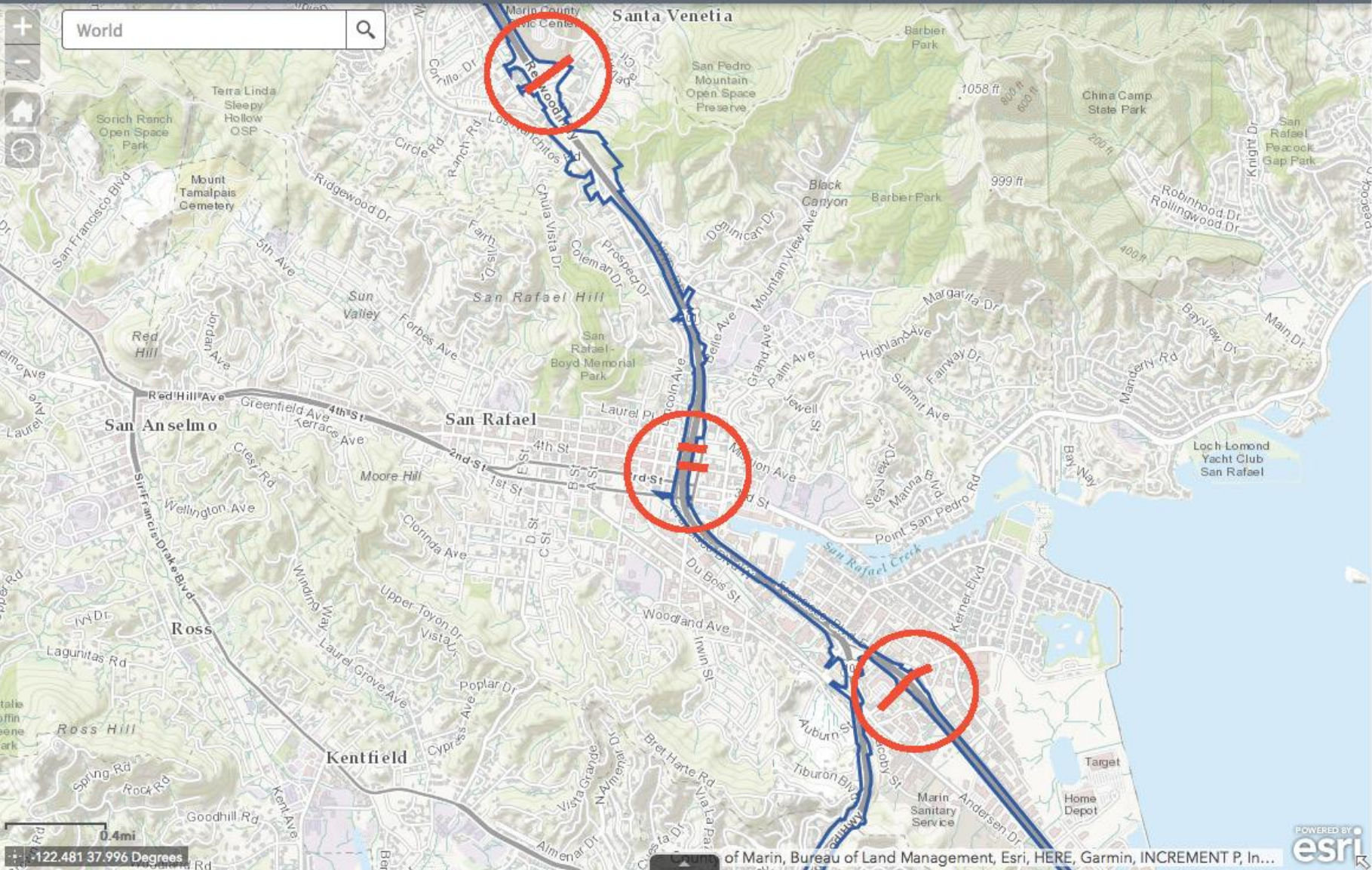


*Hwy 101 Undercrossing at N. San Pedro Rd. Path exists, needs minimal work to upgrade to pleasant Class I facility. Challenges exist at Caltrans on/off ramps outside photo.*

**Part of Regional SF Bay Trail:** Almost (directly connects to BT on Civic Cntr Dr., N. San Pedro)  
**Feasibility Study Needed:** Yes  
**Disadvantaged Community Served?** Yes (Canal students attend Venetia Valley School).



# CALTRANS D4 RIGHT OF WAY MAPS



122.481 37.996 Degrees