



Glenwood Elementary School Travel Plan



TABLE OF CONTENTS

1. PURPOSE	1
1.1. SR2S PLANNING, IMPLEMENTATION AND MONITORING	1
1.2. MARIN COUNTY MEASURE A	1
2. GLENWOOD ELEMENTARY SCHOOL PROFILE.....	2
2.1. SCHOOL LOCATION.....	2
2.2. ENROLLMENT AND DEMOGRAPHICS	2
2.3. SCHOOL LUNCH PROGRAM	2
2.4. EXISTING CONDITIONS.....	3
2.5. POLICIES	4
2.6. CLASSROOM EDUCATION.....	5
2.7. ENCOURAGEMENT PROGRAMS.....	5
2.8. STUDENT SURVEYS.....	5
3. BARRIERS AND OPPORTUNITIES	6
3.1. PARENT SURVEY.....	6
3.2. SAN RAFAEL TASK FORCE.....	7
4. PROGRAMS AND PROJECTS.....	7
4.1. ENGINEERING DESIGN CONCEPTS	7
5. IMPLEMENTATION MATRIX.....	7
APPENDIX A: ENGINEERING CONCEPTS.....	8

Tables

Table 1: Glenwood School Enrollment by Grade, 2008/09.....	2
Table 2: Glenwood Racial and Ethnic Subgroups, 2008/09.....	2
Table 3: How Students Got To School.....	5

Figures

Figure 1: How Children Got To School.....	6
Figure 2: School Area Improvements (1 of 3).....	10
Figure 3: School Area Improvements (2 of 3).....	10
Figure 4: School Area Improvements (3 of 3).....	10

This page intentionally left blank

1. Purpose

1.1. SR2S Planning, Implementation and Monitoring

The Glenwood Elementary School Travel Plan is the blueprint for identifying and prioritizing Safe Routes to School (SR2S) programs, resources, and capital improvements. The Travel Plan also documents program activities and impacts on school-related travel that can be used to assess the success of the SR2S program over time, and important school-specific transportation policies and operations.

The Travel Plan differs from most plans in that it is not a snapshot in time but a living document; one that is repeatedly updated and modified to reflect school staff, community, and parent input along with technical information and lessons learned. This input is primarily captured by a SR2S task force that meets periodically to identify and address new concerns. For more information on Safe Routes to School partnerships in Marin County, visit www.saferoutestoschools.org

1.2. Marin County Measure A

The Transportation Sales Tax Measure Expenditure Plan approved by voters as Measure A in November 2004 dedicates an estimated \$332 million in local sales tax revenues to transportation needs in Marin County. Approximately \$36.5 million (11%) of the sales tax expenditure has been earmarked to reduce school related congestion and safer access to schools. These funds are allocated to three sub-strategies, or programs:

- Safe Routes to School (SR2S)
- Crossing Guards
- Safe Pathways to School

The Safe Pathways infrastructure program is integral to the success of the overall strategy; it is the capital improvement element of the Safe Routes to School program. As a stated policy in the *Transportation Authority of Marin (TAM) Measure A – Transportation Sales Tax Strategic Plan Update (2009)*, all projects eligible for Safe Pathways funding must be identified in Safe Routes plans. The Glenwood Elementary School Travel Plan qualifies as such a plan and identifies potential capital projects eligible for Safe Pathways funding.

2. Glenwood Elementary School Profile

2.1. School Location

800 Belle Avenue, San Rafael Drive
Principal: Ruth Reynolds

2.2. Enrollment and Demographics

Table 1 shows the number of students enrolled in each grade for the 2008/09 school year. **Table 2** shows the racial and ethnic breakdown of the student population

Table 1: Glenwood School Enrollment by Grade, 2008/09

Grade Level	Enrollment
Kindergarten	66
Grade 1	74
Grade 2	65
Grade 3	82
Grade 4	49
Grade 5	52
Total	388
<i>Source: California Department of Education</i>	

Table 2: Glenwood Racial and Ethnic Subgroups, 2008/09

Racial and Ethnic Subgroup	Number of Students	Percent of Students
African American	7	1.8%
American Indian or Alaska Native	0	0%
Asian	27	7.0%
Filipino	0	0%
Hispanic or Latino	48	12.4%
Pacific Islander	0	0%
White (Not Hispanic)	290	74.7%
Multiple or No Response	16	4.1%
<i>Source: California Department of Education</i>		

2.3. School Lunch Program

There are 40 children enrolled in the free lunch program in the 2007-08 school year

2.4. Existing Conditions

Entrances to School

- Castlewood Drive and Marin Street
- Cross Street: Castlewood Drive and Knight Drive
- ADA accessible

Crossing Guards

Safety Patrol

- Crossing guards are upper grade students who have volunteered to oversee the safety of our students crossing Knight Drive and Castlewood Drive. Parent volunteers are assisting them in the morning and afternoon. Please follow these rules:
 - When the whistle blows and the stop signs are extended into the street, traffic in all directions must stop. At that time, pedestrians on all four corners will be allowed to cross.
 - Traffic resumes when the whistle blows again.
- Please give our Safety Patrol your complete cooperation.
- Children should only cross at crosswalks with Safety Patrol parents or students

Transit

- School bus availability: Yes
- Public Transit Availability: No
- Special Transit needs offered:

Bike Racks

- Location of bike racks: in front of school
- Number of bikes that can be stored: approximately 50
- Condition of rack and security issues: good condition

2.5. Policies

Pick Up and Drop Off

- The school parking lot has marked parking spaces which should be used when parents wish to walk their child to their classroom. We ask that if you park on the street not to block the driveways of the nearby houses. If you live nearby, please walk to and from school to eliminate unnecessary traffic.
- You may drop off and pick up your child in the circle going around the school. You may not park your car in the circle and leave it. Please be aware of bus clearance. Buses have priority.

Parking

- Location of Staff Parking: In front of the school
- Location of general public parking: In front of the school and street parking

Bicycle/Scooter Policy

Bicycles are not toys, but vehicles. The same rules that govern how cars, motorcycles, and trucks are to be driven apply to your child as a bicycle rider. His or her safety and the safety of pedestrians, motorists, and other bicycle riders depend upon the following of the traffic laws in our city.

- No one should touch another person's bike unless that person is present and permission has been given.
- ONLY 3RD, 4TH AND 5TH GRADERS ARE ALLOWED TO RIDE THEIR BIKES TO SCHOOL. ALL STUDENTS RIDING BIKES MUST WEAR A HELMET.
- Bike riders must exercise good sense and safe riding habits at all times or lose the privilege of riding to school.
- All students who ride bikes must have a bike permit on file in the office. Bike permits are available for third through fifth grade students only.
- Students should park their bikes and lock them in the bike racks. They should leave the rack area immediately and not return until school is dismissed.
- Bikes may not be ridden at any time around school buildings or in the parking lot.
- Bikes should be walked across the bridge when entering the school.
- Students should walk their bikes on the school grounds. When school is out, they should go directly home from the bike rack.
- Students may ride scooters to school, fold them up by the bike racks and place them in their backpacks. At no time can scooters be taken out of backpacks or ridden on school grounds.

2.6. Classroom Education

Glenwood Participates in the basic Safe Routes to Schools classroom program including:

- Stop Look and Listen (2nd grade)
- Walk around the Block (2nd grade)
- Helmet Safety (4th grade)
- Traffic Safety Game Show (4th grade)
- Bicycle Rodeo

2.7. Encouragement Programs

Glenwood has participated in International Walk to School Day on a annual basis and has held occasional Walk to School days and participated in the Frequent Rider Miles Contest

2.8. Student Surveys

Glenwood Elementary has conducted student surveys during the 2003/04, 2006/07, and 2009/10 school years. Students were asked how they travel between home and school. **Table 3** shows the results of the surveys.

Table 3: How Students Got To School

	Fall						
Year	Walk	Bike	Bus	Transit	Carpool	Drive Alone	Other
2003-04	18%	4%	5%		18%	56%	
2006-07	23%	5%	7%		18%	48%	
2009-10	15%	7%	8%	0%	12%	54%	4%
2010-11	12%	4%	9%	0%	10%	60%	5%
	Spring						
Year	Walk	Bike	Bus	Transit	Carpool	Drive Alone	Other
2003-04	19%	4%	8%		15%	55%	
2006-07	22%	6%	5%		22%	45%	
2009-10	12%	4%	8%	0%	13%	60%	3%
2010-11							

Figure 1 charts the travel information in **Table 3**. The percentage of students that rode the bus showed an inverse relationship between years, increasing from Fall to Spring during the 2003/04 school year and decreasing during the 2006/07 school year.

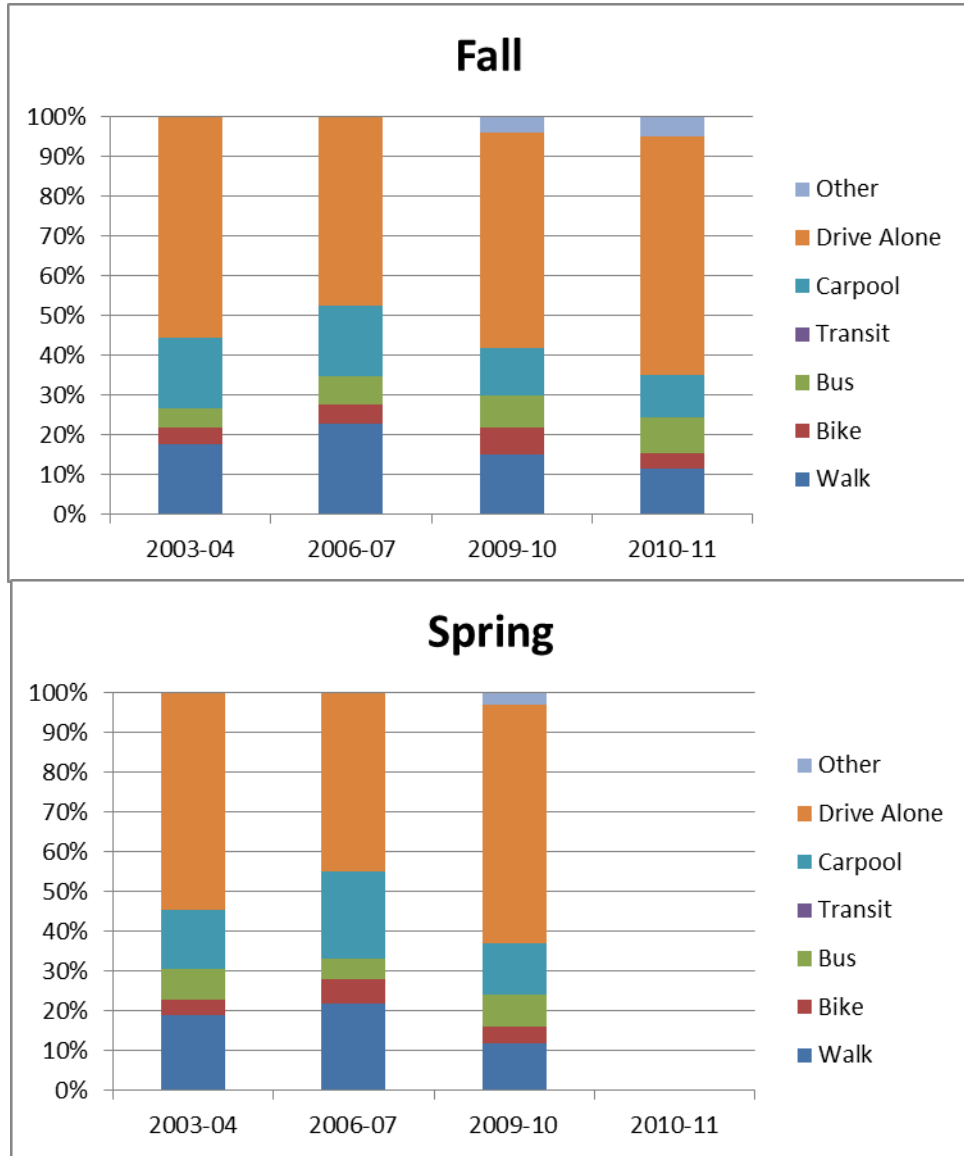


Figure 1: How Children Got To School

3. Barriers and Opportunities

3.1. Parent Survey

Glenwood Elementary has not conducted parent surveys.

3.2. San Rafael Task Force

In April 2008 the San Rafael Task Force discussed the issues influencing walking and bicycling to Glenwood Elementary. These issues are listed below.

- Motorists park on the right (NORTH or SOUTH???) side of Marin Drive, which is City and County jurisdiction.
- Bicycle racks are needed at the entrance of the school.
- San Pedro Road is difficult to cross.
 - Overhead pedestrian actuated beacon is a possible solution.

4. Programs and Projects

4.1. Engineering Design Concepts

Engineering and design concepts have not been developed for Glenwood Elementary.

5. Implementation Matrix

Implementation plans for the San Rafael Drive School District are summarized in the District Travel Plan.

Appendix A: Engineering Concepts

This page intentionally left blank.

Figure 2: School Area Improvements (1 of 3)

Figure 3: School Area Improvements (2 of 3)

Figure 4: School Area Improvements (3 of 3)