

# SCHOOL AREA IMPROVEMENTS: Sheet 3 of 3

## Existing Conditions



Student walking along parked cars on Belle Avenue near school

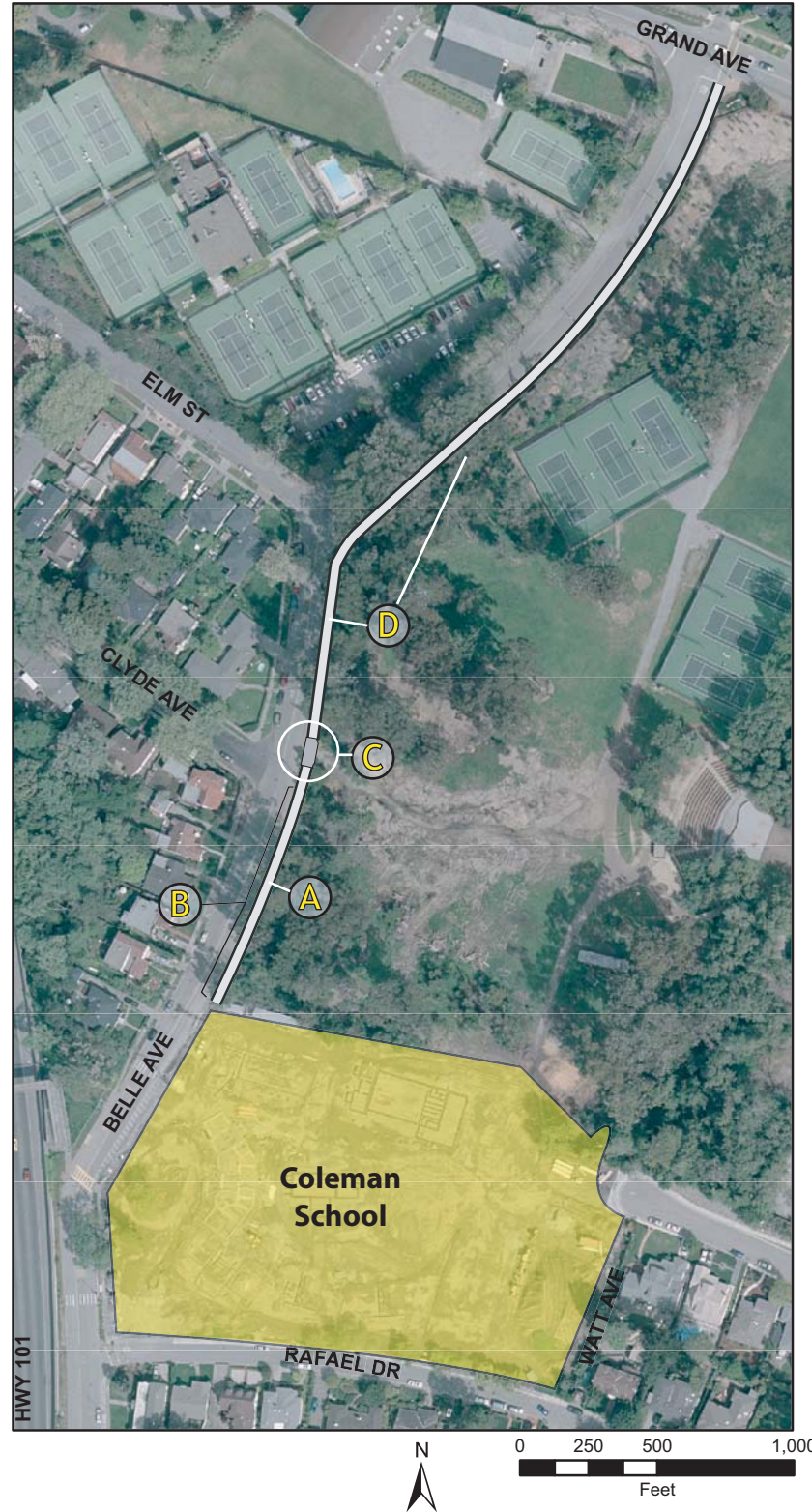


Looking south on Belle Avenue from gate to soccer fields



Looking north on Belle Avenue showing elevated berm

- Sidewalk provided only on west side of Belle Avenue between Coleman School and Grand Avenue.
- Wide, unpaved area on east side of Belle Avenue provides informal pathway.
- Unpaved area is level with roadway at school and rises to approximately 5 feet above roadway near Elm Street.
- Motorists use unpaved area near school for informal diagonal parkway.
- Dominican University has plans to improve adjacent soccer fields.



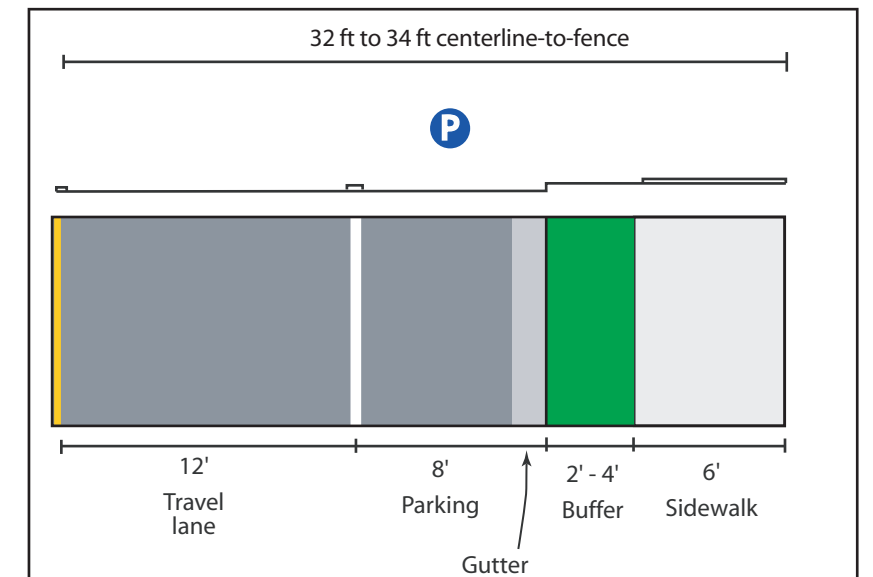
## Recommendations

Construct sidewalk along east side of Belle Avenue between Coleman School and Grand Avenue, with the following recommendations:

- (A) Construct 6-foot sidewalk, 4-foot buffer, curb and gutter along Belle Avenue between Coleman School and gate to soccer fields.
- (B) Replace angle parking with 8-foot wide parallel parking, leaving 12-foot northbound travel lane on Belle Avenue.
- (C) Construct driveway apron at soccer field gate to accommodate sidewalk.
- (D) North of soccer field gate, construct 6-foot sidewalk on top of berm.

Construction should be in conjunction with planned improvements to Dominican College soccer fields.

## Proposed Sidewalk and Parking



**DRAFT**  
5/09/2008

# SAFE ROUTES TO SCHOOL IMPROVEMENT PLAN FOR COLEMAN SCHOOL