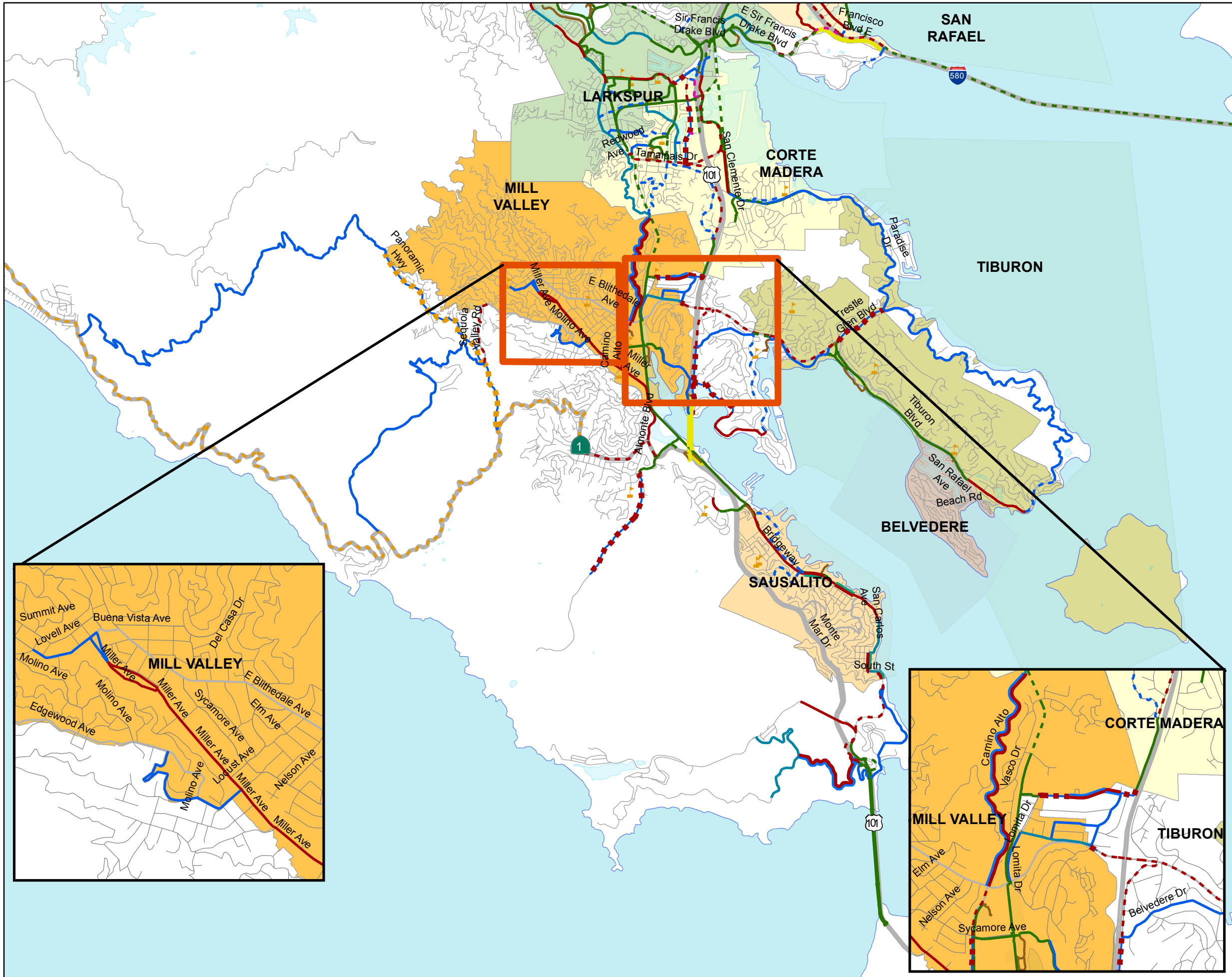
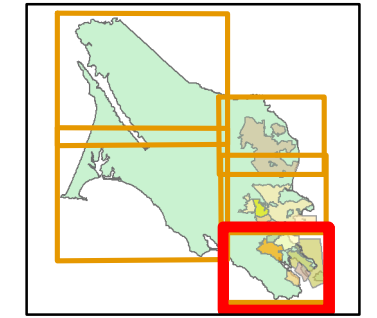


SOUTHERN MARIN COUNTY PROPOSED AND EXISTING BIKEWAY NETWORK FIGURE 5.3



Legend

- Bicycle Facilities**
- | Existing/Proposed | Existing_Class, Proposed_Class |
|-------------------|--------------------------------|
| | Exist Class I |
| | Prop Class I |
| | Exist Class II |
| | Prop Class II |
| | Exist Class IIr |
| | Prop Class IIr |
| | Exist Class III |
| | Prop Class III |
| | Exist Class IIIs |
| | Prop Class IIIs |
| | Exist One Way Class IV |
| | Prop One Way Class IV |
| | Exist Two Way Class IV |
| | Prop Two Way Class IV |
| | Ex Class III / Prop Class II |
| | Ex Class IIIr / Prop Class IIr |
| | Class II/III Combo |
| | Class II/IIIs Combo |
| | Class IIr/III Combo |
| | Class IIr/IIIs Combo |
| | Fwy Legal Route |
| | Exist Other |
| | Prop Other |
| | School |

